

GENERAL NOTES

SYMBOLS AND ABBREVIATIONS

1. THIS SHEET CONTAINS SYMBOLS AND ABBREVIATIONS TYPICALLY SHOWN ON ELECTRICAL DRAWINGS AND SCHEMATICS. THIS CONTRACT DRAWING SET MAY NOT CONTAIN ALL SYMBOLS AND ABBREVIATIONS SHOWN ON THIS SHEET.

PERMITS AND INSPECTIONS

- 1. THE CONTRACTOR SHALL OBTAIN ALL REQUIRED PERMITS AND ARRANGE FOR ALL REQUIRED INSPECTIONS IN ACCORDANCE WITH STATE AND LOCAL GOVERNING AUTHORITIES.
- 2. ALL WORK SHALL BE DONE IN ACCORDANCE WITH THE 2020 NEC, AND STATE AND LOCAL GOVERNING REGULATIONS.
- 3. PERFORM WORK AS REQUIRED BY CODES, REGULATIONS, LAWS OF LOCAL, STATE AND FEDERAL GOVERNMENTS, AND OTHER AUTHORITIES WITH LAWFUL JURISDICTION. ALL MATERIAL AND EQUIPMENT SHALL BE UL, NEMA, ANSI, IEEE, ADA & CEM

SCOPE

- 1. UNLESS OTHERWISE INDICATED, PROVIDE A COMPLETE AND OPERATIONAL ELECTRICAL SYSTEM INCLUDING ALL NECESSARY MATERIAL, LABOR, AND EQUIPMENT.
- 2. ALL DISCONNECTS REQUIRED BY CODE MAY NOT BE SHOWN. CONTRACTOR SHALL PROVIDE ALL NECESSARY DISCONNECTS AND OVERCURRENT PROTECTIVE DEVICES.
- 3. ALL EQUIPMENT AND MATERIAL SHALL BE LABELED AND LISTED, AND INSTALLED IN ACCORDANCE WITH THEIR LISTING.
- 4. PROVIDE ELECTRICAL CONNECTION FOR EVERY FIXTURE, OR ITEM OF EQUIPMENT REQUIRING SAME, WHICH IS SHOWN OR LISTED ON ANY CONTRACT DRAWING
- 5. CONTRACTOR SHALL PROVIDE NECESSARY SUPPORT FRAMING, STIFFENERS, BRACING, AND HANGERS WHETHER SHOWN OR NOT TO ENSURE A COMPLETE AND DURABLE SYSTEM. SUPPORT FRAMING CONNECTIONS SHALL BE WELDED UNLESS SPECIFICALLY SHOWN OTHERWISE. ACTUAL SUPPORTS MAY VARY FROM THOSE SHOWN IN DETAILS TO ACCOMMODATE EXISTING FIELD CONDITIONS.
- 6. THE WORK INCLUDED IN THIS CONTRACT ENCOMPASSES THE DRAWINGS AND SPECIFICATIONS. WORK INCLUDED ON THE DRAWINGS ONLY, OR IN THE SPECIFICATIONS ONLY, SHALL BE INCORPORATED AS IF INCLUDED IN BOTH. ALL SYSTEMS SHOWN ARE INTENDED TO BE COMPLETE AND FULLY FUNCTIONING. THE CONTRACTOR SHALL PROVIDE SUCH COMPONENTS AS NECESSARY FOR A FULLY FUNCTIONING SYSTEM.
- 7. ALL EQUIPMENT SHALL BE INSTALLED IN A NEAT AND WORKMANLIKE MANNER, RECTILINEAR TO BUILDING STRUCTURE.
- 8. CONTRACTOR SHALL FIELD VERIFY ALL SITE CONDITIONS AND DIMENSIONS PRIOR TO COMMENCEMENT OF ANY WORK OR SHOP FABRICATION. REQUIRED CHANGES TO WORK SHOWN ON CONSTRUCTION DRAWINGS SHALL BE APPROVED BY THE ENGINEER IN WRITING, OTHER TRADES, AND OWNER AS REQUIRED PRIOR TO ANY CONSTRUCTION.

COORDINATION OF WORK

- 1. THE CONTRACTOR SHALL COORDINATE AND VERIFY THAT WORKING AND DEDICATED EQUIPMENT SPACE REQUIREMENTS ARE MET PER NEC AND AHJ.
- 2. FIELD LOCATE ALL CORE DRILL LOCATIONS.
- 3. BEFORE CUTTING OR DRILLING INTO BUILDING ELEMENTS INSPECT AND LAYOUT WORK TO AVOID DAMAGING STRUCTURAL ELEMENTS AND BUILDING UTILITIES.
- 4. BEFORE SELECTING MATERIAL/EQUIPMENT AND PROCEEDING WITH WORK, INSPECT AREAS WHERE MATERIAL AND EQUIPMENT ARE TO BE INSTALLED TO INSURE SUITABILITY, AND CHECK NEEDED SPACE FOR PLACEMENT, CLEARANCES AND INTERCONNECTIONS.
- 5. POSSIBLE SYSTEM SHUT-DOWNS AND WORK AREAS CLOSURES MUST BE COORDINATED WITH THE OWNER.
- 6. TURN OVER TO THE OWNER ALL MANUFACTURER'S WARRANTIES FOR EQUIPMENT AND MATERIALS PROVIDED.

DEFINITIONS

- 1. THE DEFINITION OF ELECTRICAL TERMS USED SHALL BE AS DEFINED IN THE EDITION OF THE NATIONAL ELECTRIC CODE (NEC) AS REFERENCED IN THE BUILDING CODE OF NEW YORK STATE.
- 2. THE TERM "INDICATED" SHALL MEAN "AS SHOWN ON CONTRACT DOCUMENTS (SPECIFICATIONS, DRAWINGS, AND RELATED ATTACHMENTS)".
- 3. THE TERM "PROVIDE" SHALL MEAN "TO FURNISH, INSTALL, AND CONNECT COMPLETELY".
- 4. THE TERM "SIZE" SHALL MEAN ONE OR MORE OF THE FOLLOWING: "LENGTH, CURRENT AND VOLTAGE RATING, NUMBER OF POLES, NEMA SIZE, AND OTHER SIMILAR ELECTRICAL CHARACTERISTICS".

PLANS

- 1. ELECTRICAL PLANS, DETAILS, AND ONE LINE DIAGRAMS SHOW THE GENERAL LOCATION AND ARRANGEMENT OF THE ELECTRICAL SYSTEM. THEY ARE DIAGRAMMATIC AND DO NOT SHOW ALL CONDUIT BODIES, CONNECTORS, BENDS, FITTINGS, HANGERS, AND ADDITIONAL PULL BOXES WHICH THE CONTRACTOR MUST PROVIDE TO COMPLETE THE ELECTRICAL SYSTEM.
- 2. ELECTRICAL PLANS AND DETAILS DO NOT SHOW ALL INTERFERENCES AND CONDITIONS, VISIBLE AND/OR HIDDEN, THAT MAY EXIST. CONTRACTOR MUST INSPECT AND SURVEY THE SPACE BEFORE PERFORMING THE WORK.
- 3. THESE DRAWINGS ARE SCHEMATIC IN NATURE AND REPRESENT A COMPLETED PROJECT. MINOR MODIFICATIONS OF WORK SHALL BE PROVIDED BY THE CONTRACTOR TO COMPLY WITH PROJECT REQUIREMENTS, LOCATIONS OF DEVICES AND EQUIPMENT SHOW A GENERAL ARRANGEMENT AND INTENDED FUNCTION. ALL COMPONENTS SHOWN ON THE RISER DIAGRAMS, BUT NOT ON THE PLAN OR VICE VERSA, SHALL BE INCLUDED AS IF SHOWN ON BOTH. EXACT LOCATION OF MECHANICAL EQUIPMENT THAT REQUIRE ELECTRICAL CONNECTIONS ARE SHOWN ON THE MECHANICAL DRAWINGS. BEFORE INSTALLATION OF WORK, CHECK FOR SWINGS AND ALL REQUIRED CLEARANCES, TO AVOID INTERFERENCE WITH OTHER TRADES. COORDINATE WITH ALL CONTRACT DOCUMENTS, SHOP DRAWINGS AND EQUIPMENT DRAWINGS. THE CONTRACTOR IS RESPONSIBLE FOR OBTAINING ALL REQUIRED CONTRACT DRAWINGS.

GENERAL ABBREVIATIONS

A	AMPERES	LTG	LIGHTING
ADA	AMERICANS WITH DISABILITIES ACT	LFMC	LIQUID-TIGHT FMC
AFF	ABOVE FINISH FLOOR	MC	METAL CLAD CABLE
AFG	ABOVE FINISH GRADE	MCB	MAIN CIRCUIT BREAKER
AHJ	AUTHORITY HAVING JURISDICTION	MCP	MOTOR CIRCUIT PROTECTOR
AIC	AMPERE INTERRUPTING CAPACITY	MFR	MANUFACTURER
AL	ALUMINUM	MLO	MAIN LUGS ONLY
ATS	AUTOMATIC TRANSFER SWITCH		
AWG	AMERICAN WIRE GAUGE		
AXL	ACROSS-THE-LINE MOTOR STARTER	NC	NORMALLY CLOSED
		NEC	NATIONAL ELECTRIC CODE
BFG	BELOW FINISH GRADE	NEMA	NATL ELECTRICAL MFR'S ASSOC.
BLDG	BUILDING	NF	NON FUSED
		NTS	NOT TO SCALE
C	CONDUIT		
CB	CIRCUIT BREAKER	P	POLE
CKT	CIRCUIT	PH	PHASE
CL	CENTERLINE	PVC	POLYVINYL CHLORIDE
CLF	CURRENT LIMITING FUSE		
CT	CURRENT TRANSFORMER	QTY	QUANTITY
CU	COPPER		
		REQ'D	REQUIRED
DWG	DRAWING	RMC	RIGID METAL CONDUIT
		RTU	ROOF TOP UNIT
EC	ELECTRICAL CONTRACTOR		
ECB	ENCLOSED CIRCUIT BREAKER	SP	SPARE
EF	EXHAUST FAN	TYP	TYPICAL
EM	EMERGENCY		
EMT	ELECTRICAL METALLIC TUBING		
		UG	UNDERGROUND OR UNDERGRADE
F	FUSE	UON,UNO	UNLESS OTHERWISE NOTED
FLA	FULL LOAD AMPERES		
FMC	FLEXIBLE METAL CONDUIT	V	VOLT
FT	FEET		
		W	WIRE
GFCI,GFI	GROUND-FAULT CIRCUIT INTERRUPTER	WAP	WIRELESS ACCESS POINT
GND,G	GROUND OR GROUNDING	WP	WEATHER PROOF RATED DEVICE
		XFMR	TRANSFORMER
HOA	HAND, OFF, AUTOMATIC SWITCH	Δ	DELTA
KCMIL	THOUSAND CIRCULAR MILS	Y	WYE
KVA	KILOVOLT AMPERES	ϕ	PHASE
KW	KILOWATTS		

DRAWING NOTATION

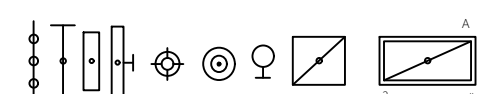
● HEAVY & SOLID INDICATES LIGHTING FIXTURES TO BE REMOVED AND REPLACED IN KIND BY CONTRACTOR.

TEXT ADJACENT TO EQUIPMENT IS SOMETIMES ADDED FOR EXTRA CLARIFICATION ON DEMO/EXISTING TO REMAIN ITEMS. REFER TO LIST BELOW FOR DEFINITIONS.

TBR	EXISTING EQUIPMENT TO BE REMOVED BY CONTRACTOR
ETR	EXISTING EQUIPMENT TO REMAIN. CONTRACTOR SHALL MAINTAIN IN OPERATION.
ERE	EXISTING EQUIPMENT TO BE REMOVED AND RELOCATED AS SHOWN BY CONTRACTOR.
ETN	EXISTING EQUIPMENT TO BE REMOVED AND REPLACED WITH NEW BY CONTRACTOR

GENERAL SCHEDULES

LIGHT FIXTURES



- 'A' UPPER CASE LETTER INDICATES FIXTURE TYPE.
- 'a' LOWER CASE LETTER INDICATES SWITCH CONTROL. WHERE NO SWITCH CONTROL DESIGNATION IS PROVIDED, CONTROL SHALL BE VIA MASTER ROOM SWITCH OR MASTER ROOM OCCUPANCY SENSOR (WHERE PROVIDED).
- # INDICATES PANELBOARD CIRCUIT TO WHICH FIXTURE SHALL BE CIRCUITED.
- NL INDICATES NIGHT LIGHT. FIXTURE SHALL NOT HAVE SWITCH CONTROL.

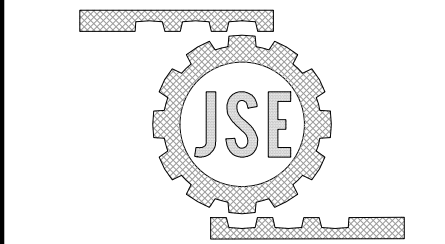
LIGHTING

NO.	DESCRIPTION	DATE



JADE STONE ENGINEERING

mechanical, electrical, plumbing



444 VANULZEE ST. WATERTOWN NY 13601
P: 315.836.4062 jse.engineering

JSE PROJECT NO:	305-21
DRAWN BY:	NJM
CHECKED BY:	REW
SCALE:	AS NOTED
DATE:	03-11-22

ELECTRICAL LEGENDS, ABBREVIATIONS, & GENERAL NOTES

SUNY CANTON 231068 REPLACE LIGHTING-
CONVOCAATION ATHLETIC RECREATION CENTER

STATE UNIVERSITY OF NEW YORK AT CANTON
ST. LAWRENCE COUNTY

JSE SHEET NO.
E001

REVIEW DOCUMENTS

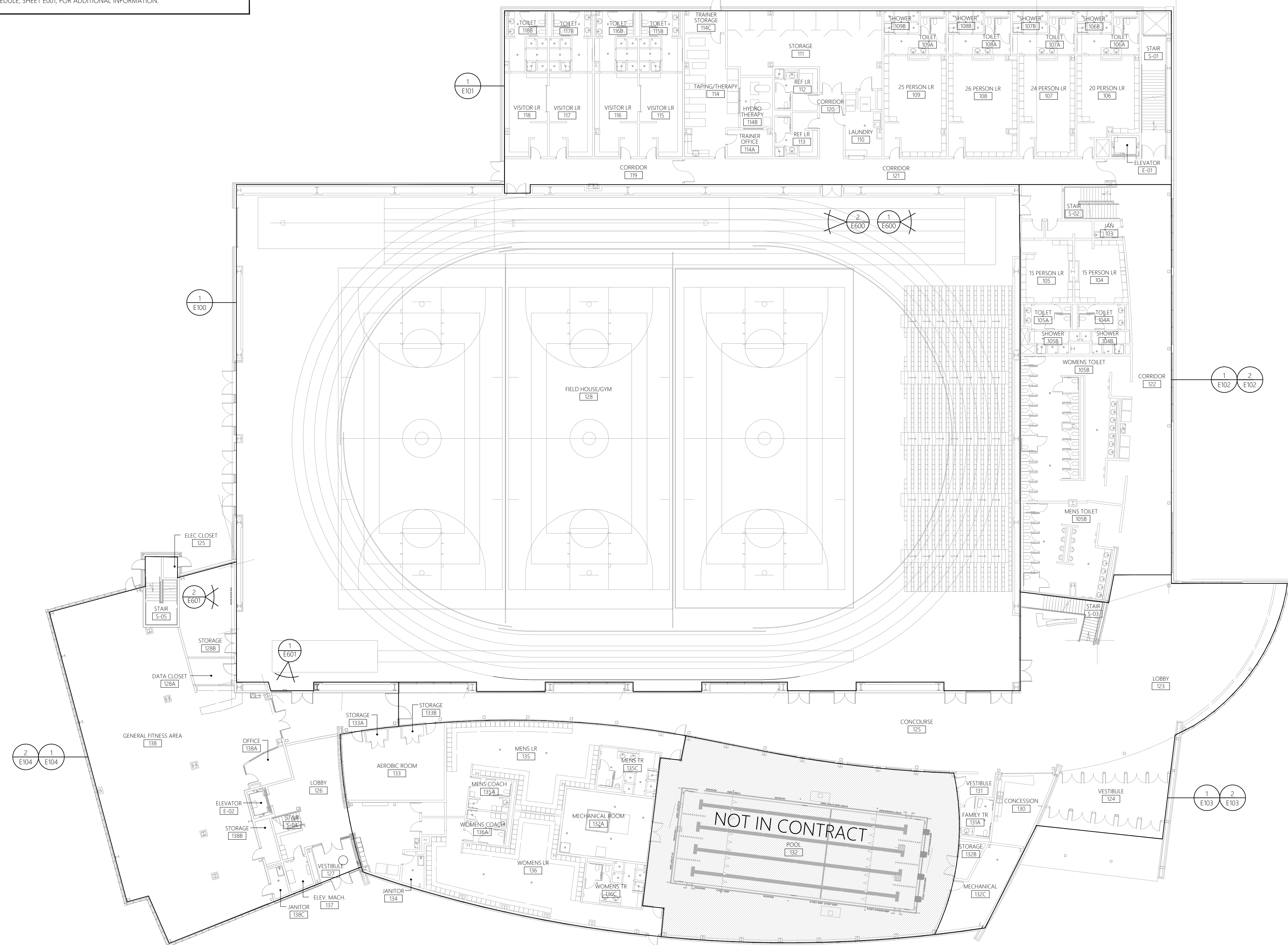
GENERAL SCOPE OF WORK:

- LIGHTING:** LIGHTING FIXTURES SHOWN TO BE REMOVED & REPLACED IN KIND - UNLESS OTHERWISE INDICATED ON PLAN:
- MAINTAIN HOMERUNS, FOR RECONNECTION TO NEW LIGHTING FIXTURES.
 - MAINTAIN SWITCHING DEVICES/MEANS IN GOOD CONDITION THROUGHOUT PROJECT FOR RE-USE OF REPLACEMENT FIXTURES.
 - DISPOSE OF ALL LAMPS IN ACCORDANCE WITH STATE/FEDERAL AND EPA REQUIREMENTS.
 - SUNY CANTON SHALL HAVE RIGHT OF FIRST REFUSAL FOR ALL REMOVED FIXTURES. ALL REMAINING FIXTURES SHALL BECOME THE PROPERTY OF THE CONTRACTOR.
 - REPLACE REMOVED FIXTURES IN ORIGINAL LOCATION. REFER TO LUMINAIRE SCHEDULE, SHEET E001, FOR ADDITIONAL INFORMATION.

GENERAL SHEET NOTES:

1. REFER TO E001 FOR ELECTRICAL LEGENDS, ABBREVIATIONS AND GENERAL PROJECT NOTES.
2. ALL CONDUCTORS SHALL BE THHN/THWN-2.
3. INSTALLATION SHALL BE PER NEC/1 GUIDELINES.
4. PROVIDE HANGARS & SUPPORTS AS REQUIRED.
5. PROVIDE GROUNDING PER NEC FOR ALL ELECTRICAL EQUIPMENT AND ASSOCIATED EQUIPMENT.
6. PROVIDE SUBMITTAL DATA FOR ALL PROPOSED HARDWARE, DEVICES, CONDUIT, HANGERS, ETC. FOR ENGINEER REVIEW & APPROVAL PRIOR TO ORDERING.
7. ALL CONDUCTORS AND EQUIPMENT NOT SHOWN FOR CLARITY. COORDINATE WITH ALL TRADES AND PROVIDE COMPLETE ELECTRICAL CIRCUITING FOR ALL INSTALLED EQUIPMENT. ALL REQUIREMENTS TO BE PER NEC.

IT IS A VIOLATION OF NEW YORK STATE LAW, SECTION 7209, FOR ANY PERSON TO ALTER ANY DOCUMENT THAT BEARS THE SEAL OF A PROFESSIONAL ENGINEER, UNLESS THE PERSON IS ACTING UNDER THE DIRECTION OF A LICENSED PROFESSIONAL ENGINEER. IF ALTERED, SUCH LICENSEE SHALL AFFIX HIS OR HER SEAL AND THE NOTIFICATION "ALTERED BY" FOLLOWED BY HIS OR HER SIGNATURE, DATE AND A SPECIFIC DESCRIPTION OF THE ALTERATION.



1 ELECTRICAL OVERALL PLAN
SCALE: 1/16" = 1'-0"

NO.	DESCRIPTION	DATE



JADE STONE ENGINEERING
mechanical, electrical, plumbing

444 VANDUZZE ST. WATERTOWN NY 13601
P: 315.836.4062 jse.engineering

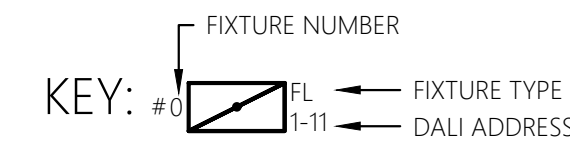
JSE PROJECT NO: 305-21	SCALE: AS NOTED	DATE: 03-11-22
DRAWN BY: MM	CHECKED BY: RW	

ELECTRICAL LIGHTING PLAN
SUNY CANTON 231068 REPLACE LIGHTING - CONVOCATION ATHLETIC RECREATION CENTER
STATE UNIVERSITY OF NEW YORK AT CANTON
ST. LAWRENCE COUNTY

IT IS A VIOLATION OF NEW YORK STATE LAW, SECTION 7209, FOR ANY PERSON TO ALTER ANY DOCUMENT THAT BEARS THE SEAL OF A PROFESSIONAL ENGINEER, UNLESS THE PERSON IS ACTING UNDER THE DIRECTION OF A LICENSED PROFESSIONAL ENGINEER. IF ALTERED, SUCH LICENSEE SHALL AFFIX HIS OR HER SEAL AND THE NOTIFICATION "ALTERED BY" FOLLOWED BY HIS OR HER SIGNATURE, DATE AND A SPECIFIC DESCRIPTION OF THE ALTERATION.

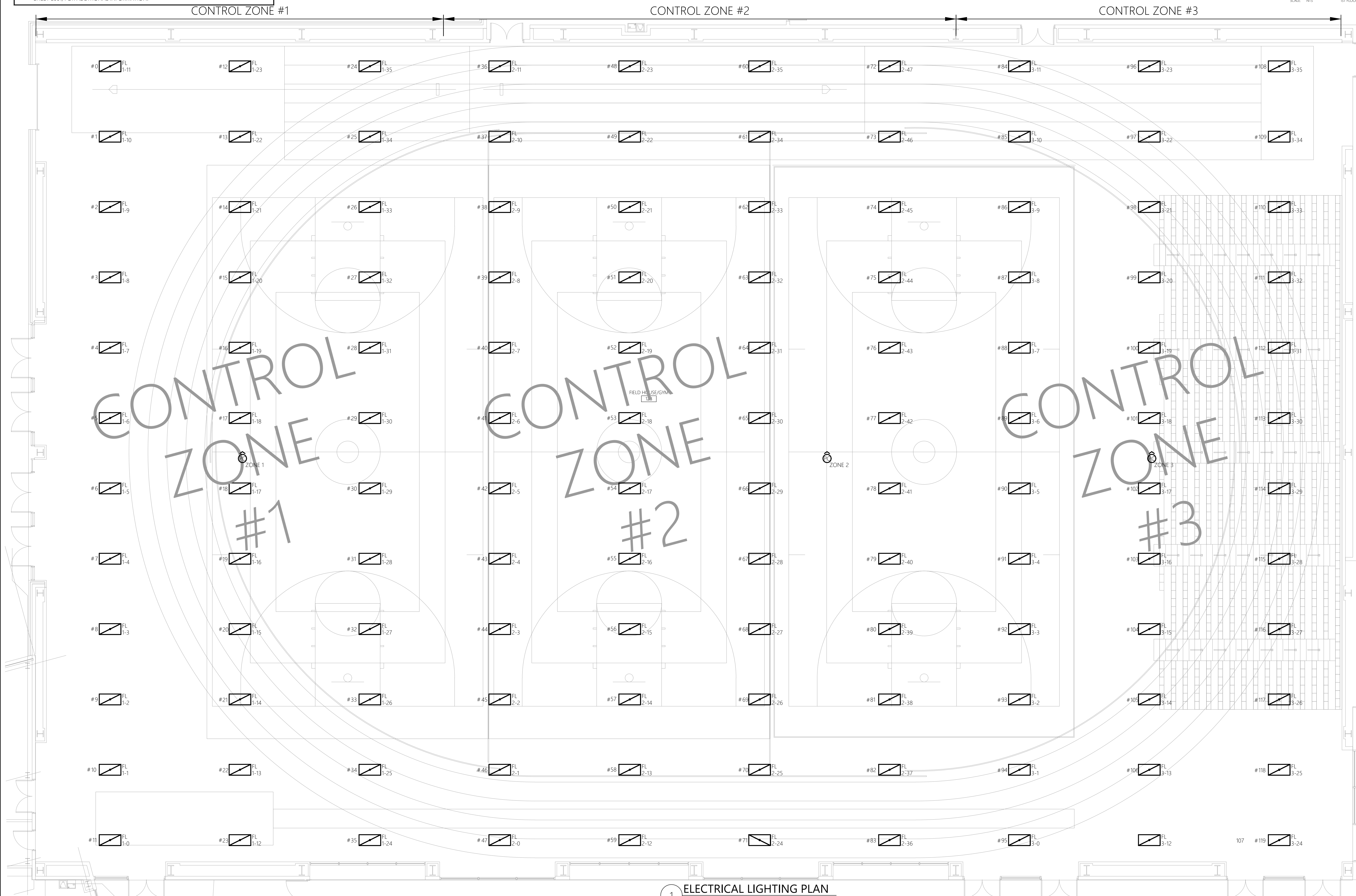
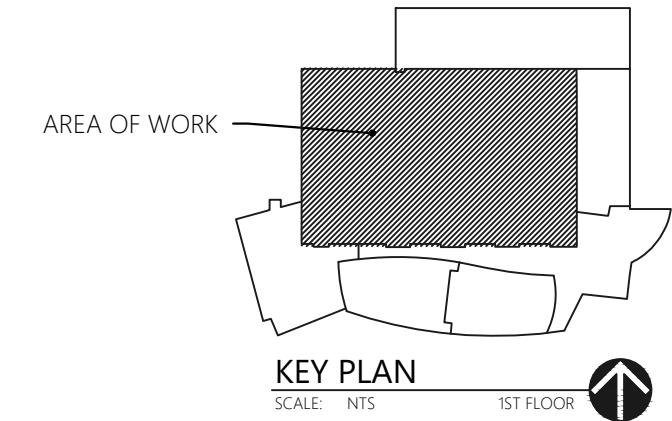
GENERAL SCOPE OF WORK:

- LIGHTING: LIGHTING FIXTURES SHOWN TO BE REMOVED & REPLACED IN KIND - UNLESS OTHERWISE INDICATED ON PLAN.
- MAINTAIN HOMERUNS, FOR RECONNECTION TO NEW LIGHTING FIXTURES.
- MAINTAIN SWITCHING DEVICES/MEANS IN GOOD CONDITION THROUGHOUT PROJECT FOR RE-USE OF REPLACEMENT FIXTURES.
- DISPOSE OF ALL LAMPS IN ACCORDANCE WITH STATE/FEDERAL AND EPA REQUIREMENTS.
- SUNY CANTON SHALL HAVE RIGHT OF FIRST REFUSAL FOR ALL REMOVED FIXTURES. ALL REMAINING FIXTURES SHALL BECOME THE PROPERTY OF THE CONTRACTOR.
- REPLACE REMOVED FIXTURES IN ORIGINAL LOCATION. REFER TO LUMINAIRE SCHEDULE, SHEET E001, FOR ADDITIONAL INFORMATION.



GENERAL SHEET NOTES:

- REFER TO E001 FOR ELECTRICAL LEGENDS, ABBREVIATIONS AND GENERAL PROJECT NOTES.
- ALL CONDUCTORS SHALL BE THHN/THWN-2.
- INSTALLATION SHALL BE PER NEC/1 GUIDELINES.
- PROVIDE HANGARS & SUPPORTS AS REQUIRED.
- PROVIDE GROUNDING PER NEC FOR ALL ELECTRICAL EQUIPMENT AND ASSOCIATED EQUIPMENT.
- PROVIDE SUBMITTAL DATA FOR ALL PROPOSED HARDWARE, DEVICES, CONDUIT, HANGERS, ETC. FOR ENGINEER REVIEW & APPROVAL PRIOR TO ORDERING.
- ALL CONDUCTORS AND EQUIPMENT NOT SHOWN FOR CLARITY. COORDINATE WITH ALL TRADES AND PROVIDE COMPLETE ELECTRICAL CIRCUITING FOR ALL INSTALLED EQUIPMENT. ALL REQUIREMENTS TO BE PER NEC.



DESCRIPTION	DATE



JADE STONE ENGINEERING
mechanical, electrical, plumbing

444 VANDUZEE ST. WATERTOWN NY 13601
P: 315.836.4062 jse.engineering

JSE PROJECT NO: 305-21	SCALE: AS NOTED	DATE: 03-11-22
DRAWN BY: MIM	CHECKED BY: RSW	

ELECTRICAL LIGHTING PLAN
SUNY CANTON 231068 REPLACE LIGHTING-
CONVOCAATION ATHLETIC RECREATION CENTER
STATE UNIVERSITY OF NEW YORK AT CANTON
ST. LAWRENCE COUNTY

JSE SHEET NO. **E100**

REVIEW DOCUMENTS

1 ELECTRICAL LIGHTING PLAN
SCALE: 1/8" = 1'-0"

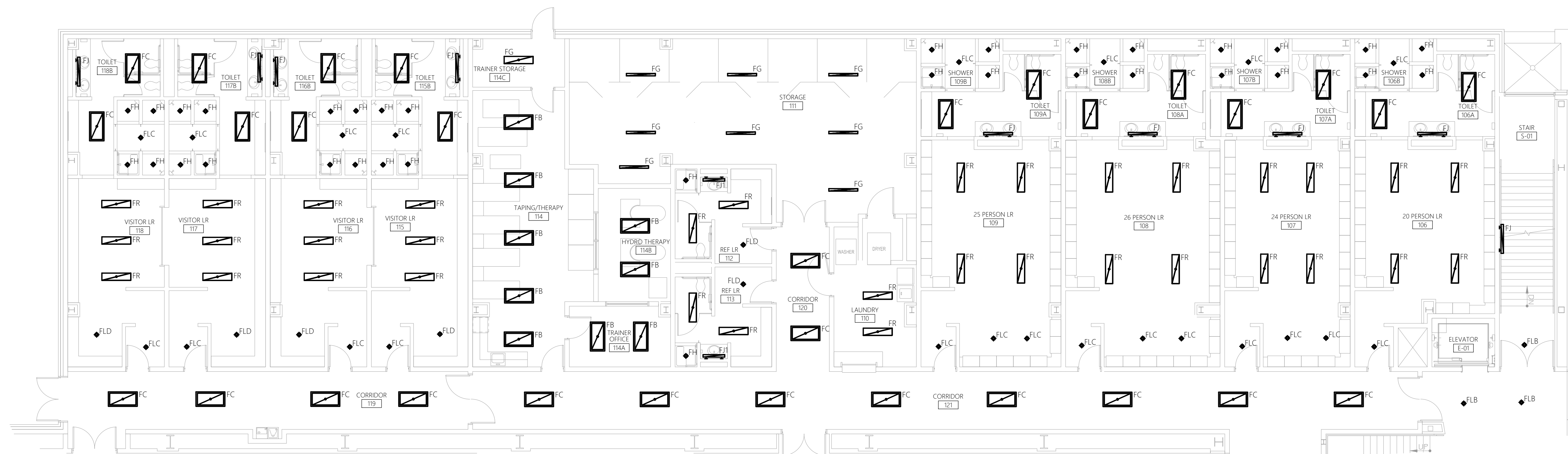
IT IS A VIOLATION OF NEW YORK STATE LAW, SECTION 7209, FOR ANY PERSON TO ALTER ANY DOCUMENT THAT BEARS THE SEAL OF A PROFESSIONAL ENGINEER, UNLESS THE PERSON IS ACTING UNDER THE DIRECTION OF A LICENSED PROFESSIONAL ENGINEER. IF ALTERED, SUCH LICENSEE SHALL AFFIX HIS OR HER SEAL AND THE NOTIFICATION "ALTERED BY:" FOLLOWED BY HIS OR HER SIGNATURE, DATE AND A SPECIFIC DESCRIPTION OF THE ALTERATION.

GENERAL SCOPE OF WORK:

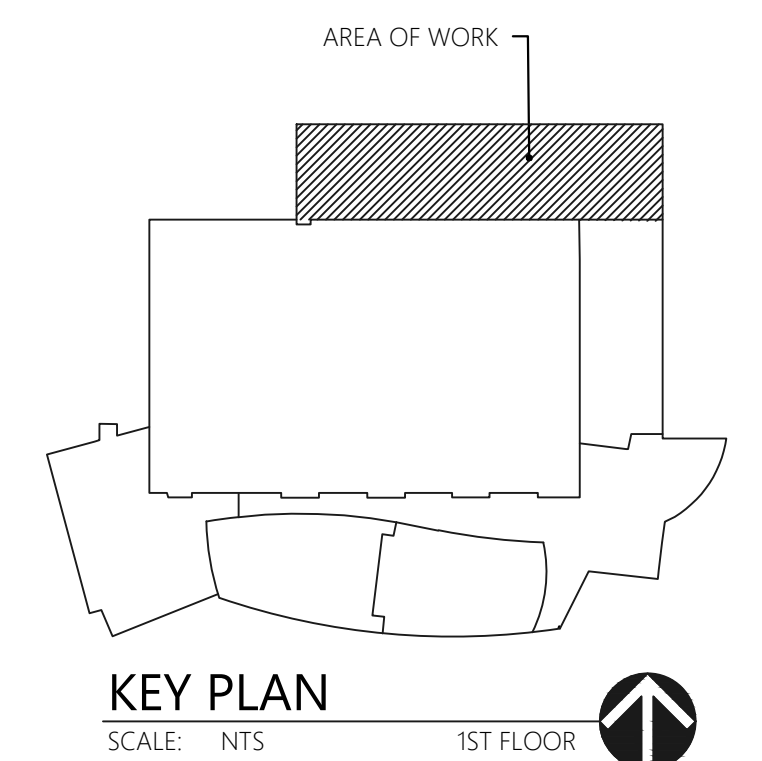
- LIGHTING: LIGHTING FIXTURES SHOWN TO BE REMOVED & REPLACED IN KIND - UNLESS OTHERWISE INDICATED ON PLAN.
- MAINTAIN HOMERUNS, FOR RECONNECTION TO NEW LIGHTING FIXTURES.
 - MAINTAIN SWITCHING DEVICES/MEANS IN GOOD CONDITION THROUGHOUT PROJECT FOR RE-USE OF REPLACEMENT FIXTURES.
 - DISPOSE OF ALL LAMPS IN ACCORDANCE WITH STATE/FEDERAL AND EPA REQUIREMENTS.
 - SUNY CANTON SHALL HAVE RIGHT OF FIRST REFUSAL FOR ALL REMOVED FIXTURES. ALL REMAINING FIXTURES SHALL BECOME THE PROPERTY OF THE CONTRACTOR.
 - REPLACE REMOVED FIXTURES IN ORIGINAL LOCATION. REFER TO LUMINAIRE SCHEDULE, SHEET E001, FOR ADDITIONAL INFORMATION.

GENERAL SHEET NOTES:

1. REFER TO E001 FOR ELECTRICAL LEGENDS, ABBREVIATIONS AND GENERAL PROJECT NOTES.
2. ALL CONDUCTORS SHALL BE THHN/THWN-2.
3. INSTALLATION SHALL BE PER NEC/AT GUIDELINES.
4. PROVIDE HANGARS & SUPPORTS AS REQUIRED.
5. PROVIDE GROUNDING PER NEC FOR ALL ELECTRICAL EQUIPMENT AND ASSOCIATED EQUIPMENT.
6. PROVIDE SUBMITTAL DATA FOR ALL PROPOSED HARDWARE, DEVICES, CONDUIT, HANGERS, ETC. FOR ENGINEER REVIEW & APPROVAL PRIOR TO ORDERING.
7. ALL CONDUCTORS AND EQUIPMENT NOT SHOWN FOR CLARITY. COORDINATE WITH ALL TRADES AND PROVIDE COMPLETE ELECTRICAL CIRCUITING FOR ALL INSTALLED EQUIPMENT. ALL REQUIREMENTS TO BE PER NEC.



1 ELECTRICAL LIGHTING PLAN
SCALE:



#	DESCRIPTION	DATE



JADE STONE ENGINEERING
mechanical, electrical, plumbing

444 VANDUZEE ST. WATERTOWN NY 13601
P: 315.836.4062 jse.engineering

JSE PROJECT NO: 305-21	SCALE: AS NOTED	DATE: 03-11-22
DRAWN BY: MUM	CHECKED BY: RW	

ELECTRICAL LIGHTING PLAN

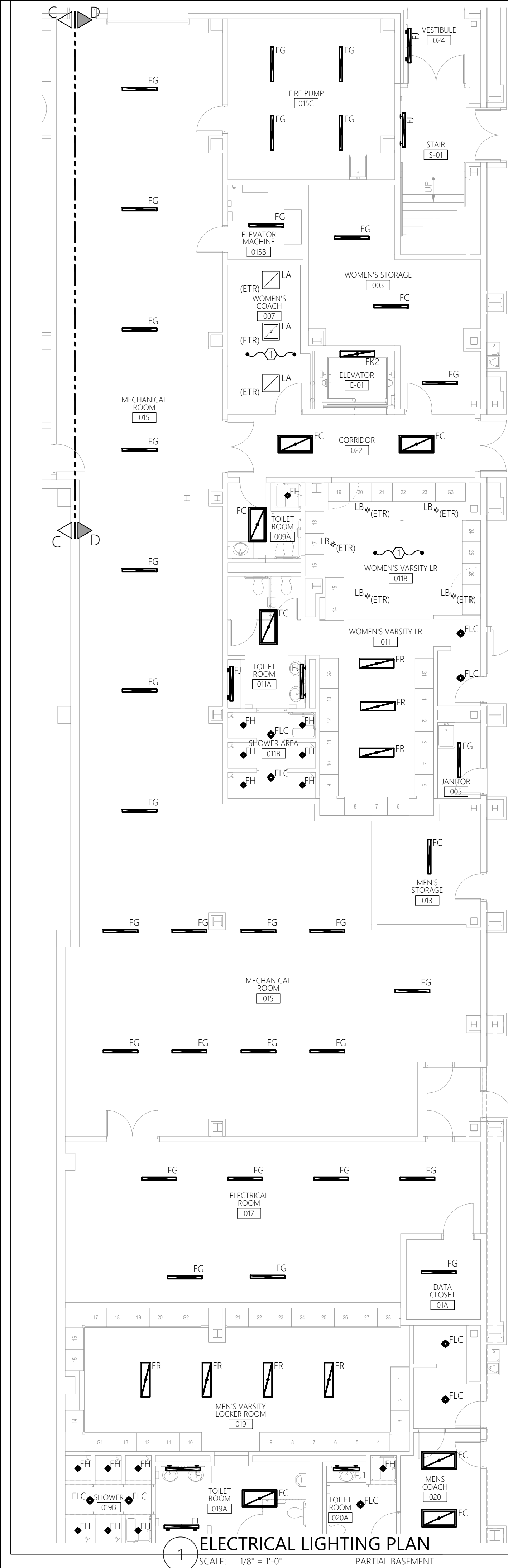
SUNY CANTON 231068 REPLACE LIGHTING-
CONVOCAATION ATHLETIC RECREATION CENTER

STATE UNIVERSITY OF NEW YORK AT CANTON
ST. LAWRENCE COUNTY

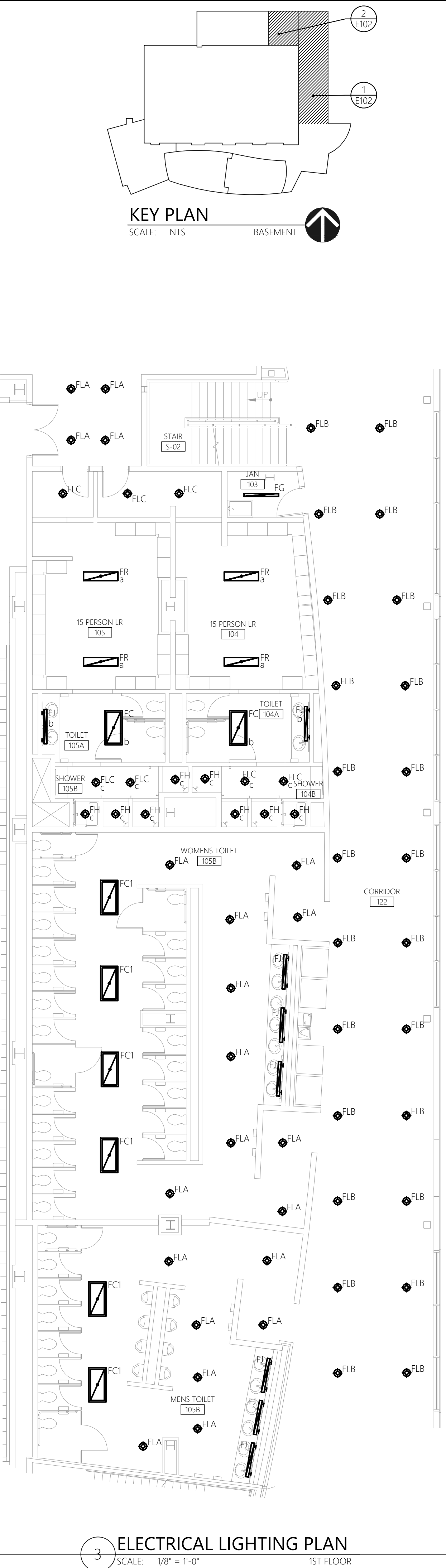
JSE SHEET NO.
E101

REVIEW DOCUMENTS

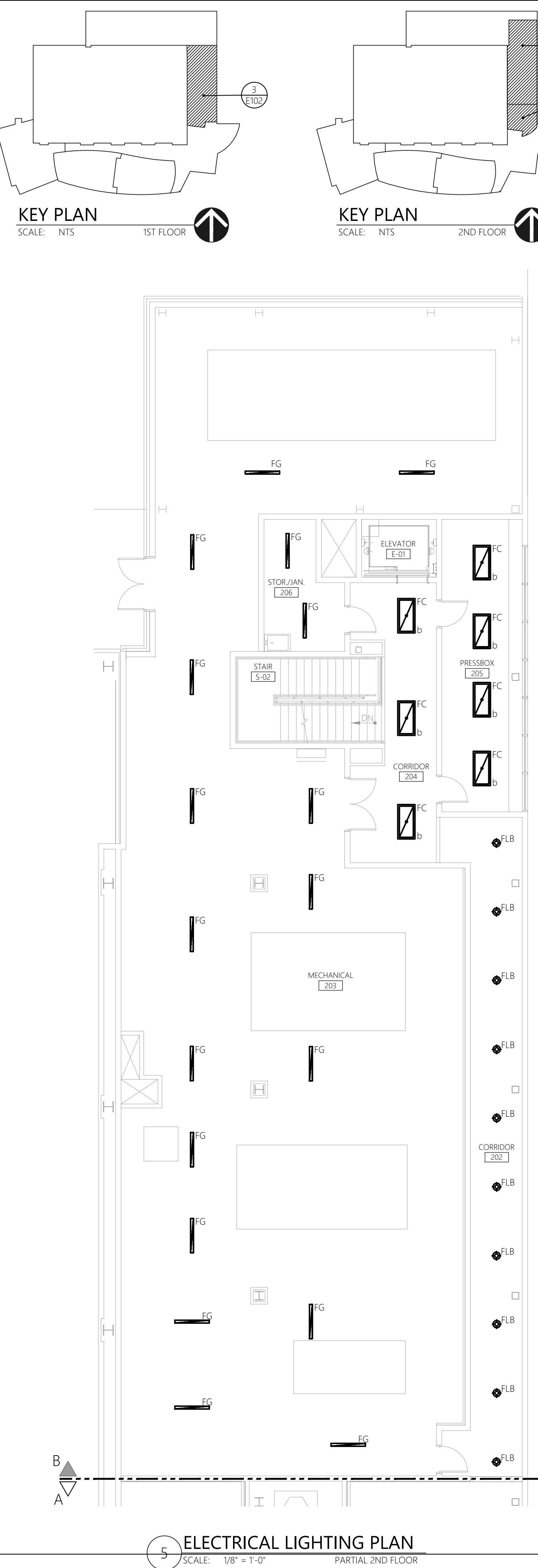
IT IS A VIOLATION OF NEW YORK STATE LAW, SECTION 7209, FOR ANY PERSON TO ALTER ANY DOCUMENT THAT BEARS THE SEAL OF A PROFESSIONAL ENGINEER, UNLESS THE PERSON IS ACTING UNDER THE DIRECTION OF A LICENSED PROFESSIONAL ENGINEER. IF ALTERED, SUCH LICENSEE SHALL AFFIX HIS OR HER SEAL AND THE NOTIFICATION "ALTERED BY" FOLLOWED BY HIS OR SIGNATURE, DATE AND A SPECIFIC DESCRIPTION OF THE ALTERATION.



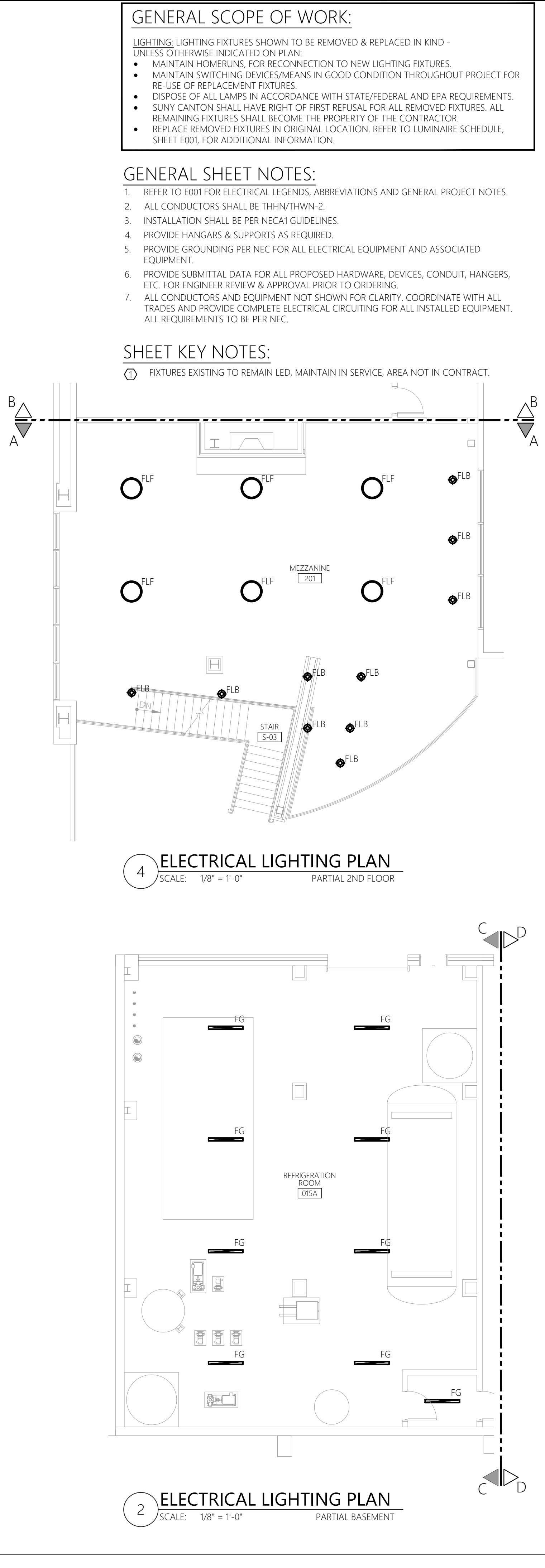
1 ELECTRICAL LIGHTING PLAN
SCALE: 1/8" = 1'-0" PARTIAL BASEMENT



3 ELECTRICAL LIGHTING PLAN
SCALE: 1/8" = 1'-0" 1ST FLOOR



5 ELECTRICAL LIGHTING PLAN
SCALE: 1/8" = 1'-0" PARTIAL 2ND FLOOR




2 ELECTRICAL LIGHTING PLAN
SCALE: 1/8" = 1'-0" PARTIAL 2ND FLOOR

- ### GENERAL SCOPE OF WORK:
- LIGHTING: LIGHTING FIXTURES SHOWN TO BE REMOVED & REPLACED IN KIND - UNLESS OTHERWISE INDICATED ON PLAN:
 - MAINTAIN HOMERUNS, FOR RECONNECTION TO NEW LIGHTING FIXTURES.
 - MAINTAIN SWITCHING DEVICES/MEANS IN GOOD CONDITION THROUGHOUT PROJECT FOR RE-USE OF REPLACEMENT FIXTURES.
 - DISPOSE OF ALL LAMPS IN ACCORDANCE WITH STATE/FEDERAL AND EPA REQUIREMENTS.
 - SUNY CANTON SHALL HAVE RIGHT OF FIRST REFUSAL FOR ALL REMOVED FIXTURES. ALL REMAINING FIXTURES SHALL BECOME THE PROPERTY OF THE CONTRACTOR.
 - REPLACE REMOVED FIXTURES IN ORIGINAL LOCATION. REFER TO LUMINAIRE SCHEDULE, SHEET E001, FOR ADDITIONAL INFORMATION.

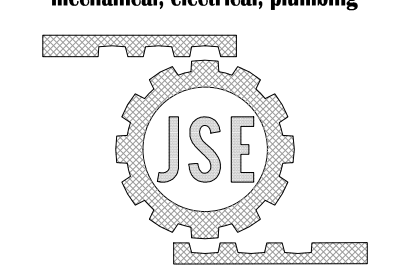
- ### GENERAL SHEET NOTES:
1. REFER TO E001 FOR ELECTRICAL LEGENDS, ABBREVIATIONS AND GENERAL PROJECT NOTES.
 2. ALL CONDUCTORS SHALL BE THHN/THWN-2.
 3. INSTALLATION SHALL BE PER NEC/AT GUIDELINES.
 4. PROVIDE HANGARS & SUPPORTS AS REQUIRED.
 5. PROVIDE GROUNDING PER NEC FOR ALL ELECTRICAL EQUIPMENT AND ASSOCIATED EQUIPMENT.
 6. PROVIDE SUBMITTAL DATA FOR ALL PROPOSED HARDWARE, DEVICES, CONDUIT, HANGERS, ETC. FOR ENGINEER REVIEW & APPROVAL PRIOR TO ORDERING.
 7. ALL CONDUCTORS AND EQUIPMENT NOT SHOWN FOR CLARITY. COORDINATE WITH ALL TRADES AND PROVIDE COMPLETE ELECTRICAL CIRCUITING FOR ALL INSTALLED EQUIPMENT. ALL REQUIREMENTS TO BE PER NEC.

- ### SHEET KEY NOTES:
- FIXTURES EXISTING TO REMAIN LED, MAINTAIN IN SERVICE, AREA NOT IN CONTRACT.

NO.	DESCRIPTION	DATE



JADE STONE ENGINEERING
mechanical, electrical, plumbing



444 VANDUZEE ST. WATERTOWN NY 13601
P: 315.836.4062 jse.engineering

JSE PROJECT NO: 305-21	SCALE: AS SHD	DATE: 03-11-22
DRAWN BY: MWM	CHECKED BY: RWM	

ELECTRICAL LIGHTING PLAN

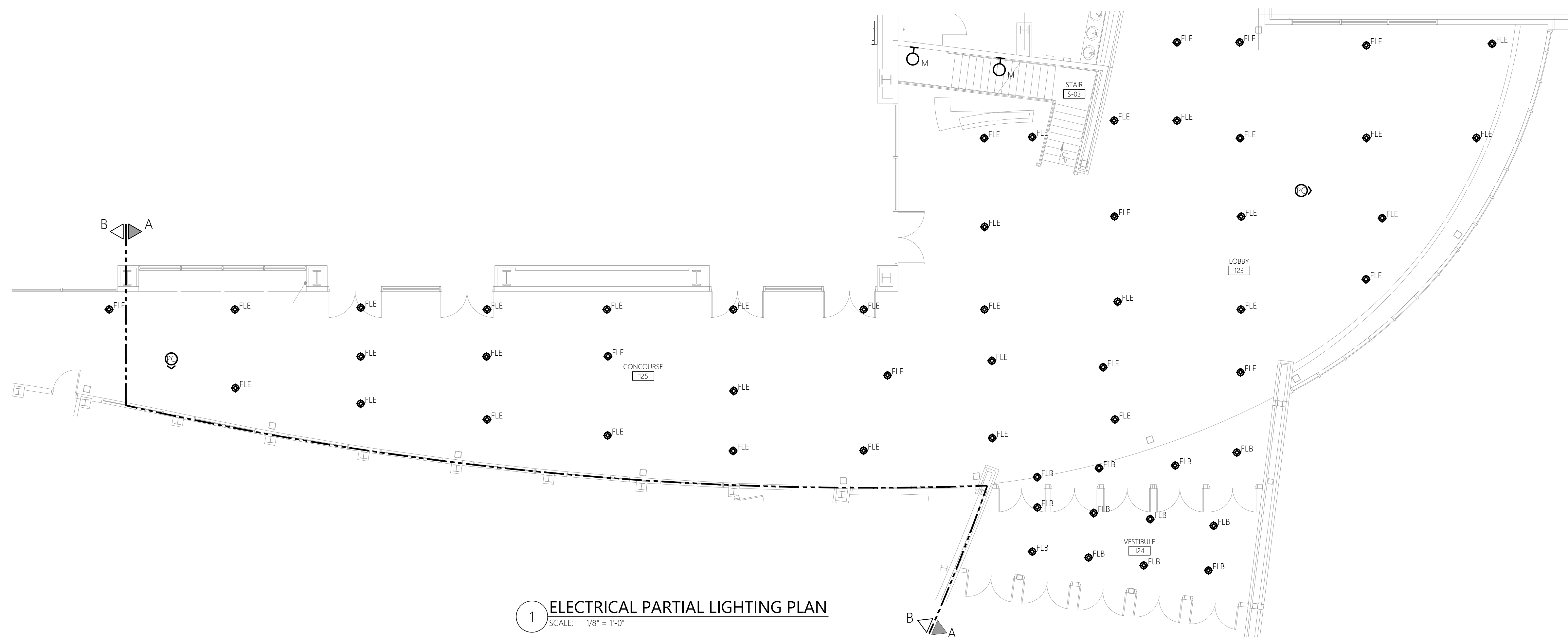
SUNY CANTON 231068 REPLACE LIGHTING-
CONVOCATION ATHLETIC RECREATION CENTER

STATE UNIVERSITY OF NEW YORK AT CANTON
ST. LAWRENCE COUNTY

JSE SHEET NO.	E102
---------------	-------------

REVIEW DOCUMENTS

IT IS A VIOLATION OF NEW YORK STATE LAW, SECTION 7209, FOR ANY PERSON TO ALTER ANY DOCUMENT THAT BEARS THE SEAL OF A PROFESSIONAL ENGINEER, UNLESS THE PERSON IS ACTING UNDER THE DIRECTION OF A LICENSED PROFESSIONAL ENGINEER. IF ALTERED, SUCH LICENSEE SHALL AFFIX HIS OR HER SEAL AND THE NOTIFICATION "ALTERED BY" FOLLOWED BY HIS OR SIGNATURE, DATE AND A SPECIFIC DESCRIPTION OF THE ALTERATION.



1 ELECTRICAL PARTIAL LIGHTING PLAN
SCALE: 1/8" = 1'-0"

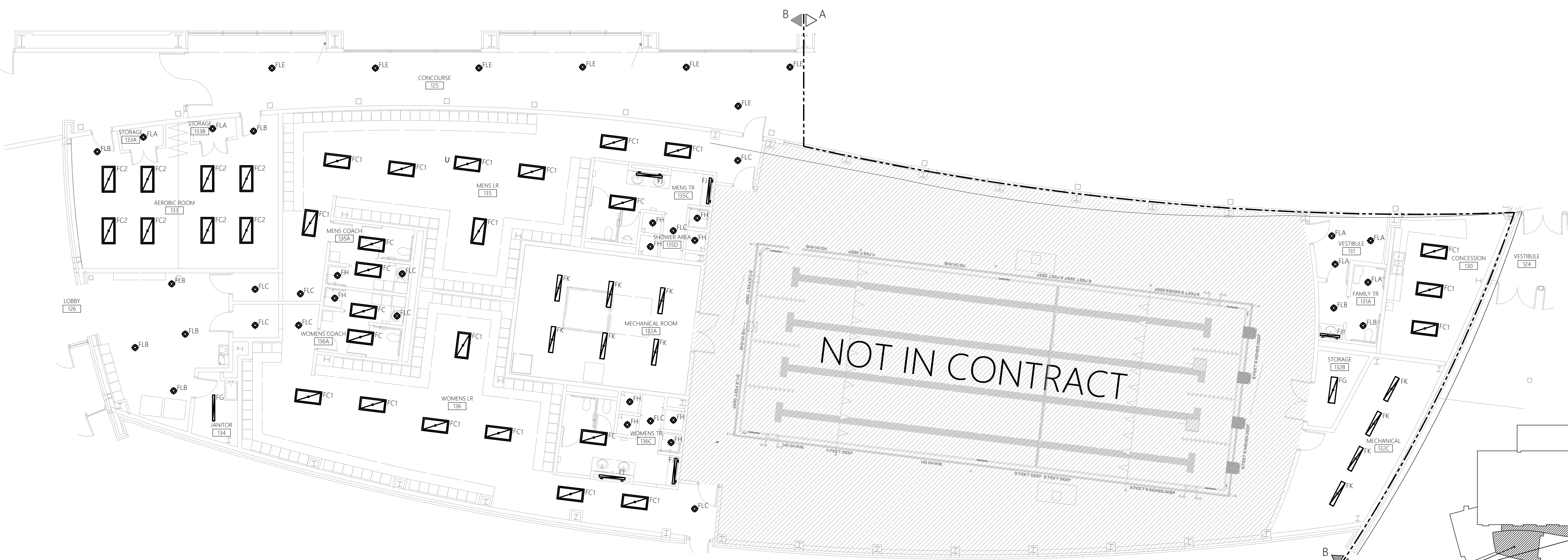
GENERAL SCOPE OF WORK:

LIGHTING: LIGHTING FIXTURES SHOWN TO BE REMOVED & REPLACED IN KIND - UNLESS OTHERWISE INDICATED ON PLAN:

- MAINTAIN HOMERUNS, FOR RECONNECTION TO NEW LIGHTING FIXTURES.
- MAINTAIN SWITCHING DEVICES/MEANS IN GOOD CONDITION THROUGHOUT PROJECT FOR RE-USE OF REPLACEMENT FIXTURES.
- DISPOSE OF ALL LAMPS IN ACCORDANCE WITH STATE/FEDERAL AND EPA REQUIREMENTS.
- SUNY CANTON SHALL HAVE RIGHT OF FIRST REFUSAL FOR ALL REMOVED FIXTURES. ALL REMAINING FIXTURES SHALL BECOME THE PROPERTY OF THE CONTRACTOR.
- REPLACE REMOVED FIXTURES IN ORIGINAL LOCATION. REFER TO LUMINAIRE SCHEDULE, SHEET E001, FOR ADDITIONAL INFORMATION.

GENERAL SHEET NOTES:

1. REFER TO E001 FOR ELECTRICAL LEGENDS, ABBREVIATIONS AND GENERAL PROJECT NOTES.
2. ALL CONDUCTORS SHALL BE THHN/THWN-2.
3. INSTALLATION SHALL BE PER NECA1 GUIDELINES.
4. PROVIDE HANGARS & SUPPORTS AS REQUIRED.
5. PROVIDE GROUNDING PER NEC FOR ALL ELECTRICAL EQUIPMENT AND ASSOCIATED EQUIPMENT.
6. PROVIDE SUBMITTAL DATA FOR ALL PROPOSED HARDWARE, DEVICES, CONDUIT, HANGERS, ETC. FOR ENGINEER REVIEW & APPROVAL PRIOR TO ORDERING.
7. ALL CONDUCTORS AND EQUIPMENT NOT SHOWN FOR CLARITY. COORDINATE WITH ALL TRADES AND PROVIDE COMPLETE ELECTRICAL CIRCUITING FOR ALL INSTALLED EQUIPMENT. ALL REQUIREMENTS TO BE PER NEC.



2 ELECTRICAL PARTIAL LIGHTING PLAN
SCALE: 1/8" = 1'-0"

NO.	DESCRIPTION	DATE



JADE STONE ENGINEERING
mechanical, electrical, plumbing

444 VANDUZZE ST. WATERTOWN NY 13601
P: 315.836.4062 jse.engineering

JSE PROJECT NO: 305-21
DRAWN BY: NUN
SCALE: AS NOTED
CHECKED BY: REN
DATE: 03-11-22

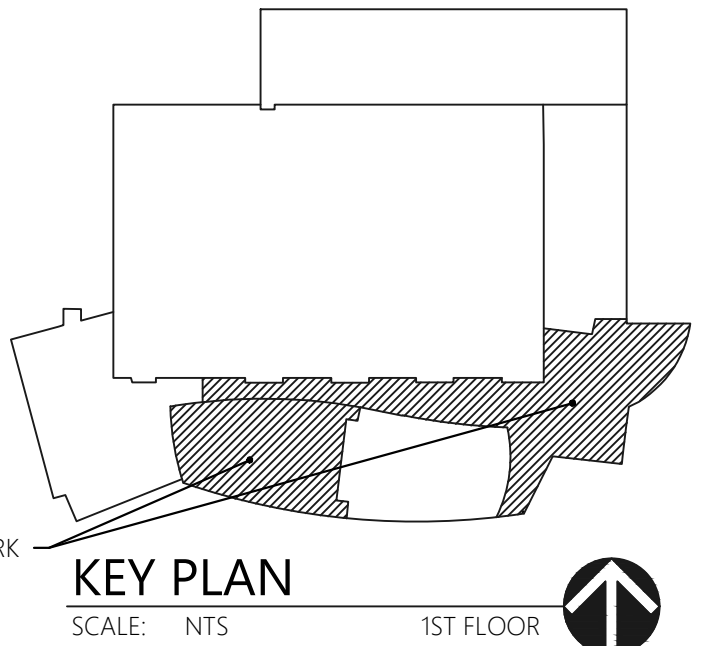
ELECTRICAL LIGHTING PLAN

SUNY CANTON 231068 REPLACE LIGHTING - CONVOCATION ATHLETIC RECREATION CENTER

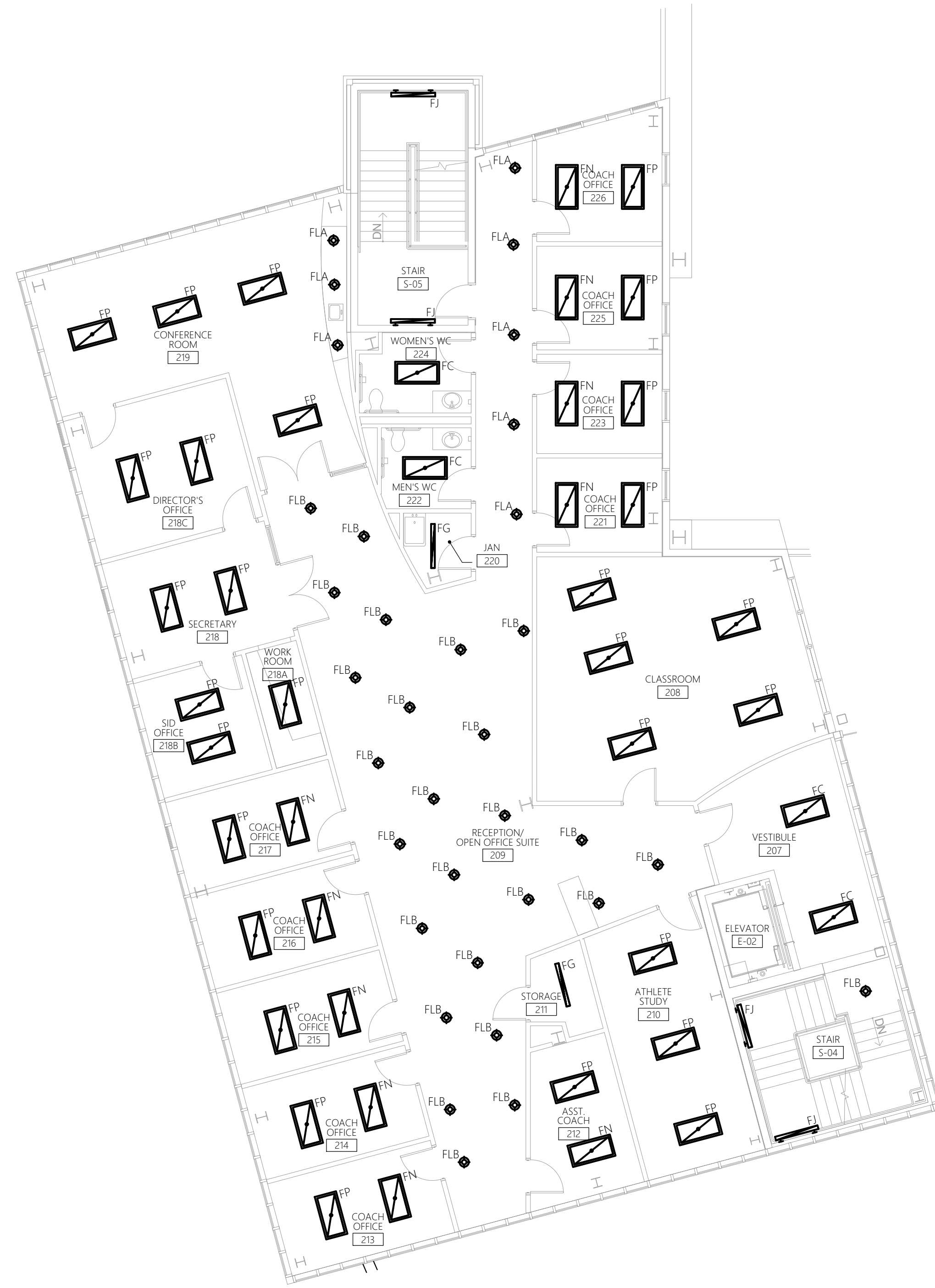
STATE UNIVERSITY OF NEW YORK AT CANTON
ST. LAWRENCE COUNTY

JSE SHEET NO.
E103

REVIEW DOCUMENTS



IT IS A VIOLATION OF NEW YORK STATE LAW, SECTION 7209, FOR ANY PERSON TO ALTER ANY DOCUMENT THAT BEARS THE SEAL OF A PROFESSIONAL ENGINEER, UNLESS THE PERSON IS ACTING UNDER THE DIRECTION OF A LICENSED PROFESSIONAL ENGINEER. IF ALTERED, SUCH LICENSEE SHALL AFFIX HIS OR HER SEAL AND THE NOTIFICATION "ALTERED BY" FOLLOWED BY HIS OR HER SIGNATURE, DATE AND A SPECIFIC DESCRIPTION OF THE ALTERATION.



2 ELECTRICAL LIGHTING PLAN
SCALE: 1/8" = 1'-0"
2ND FLOOR



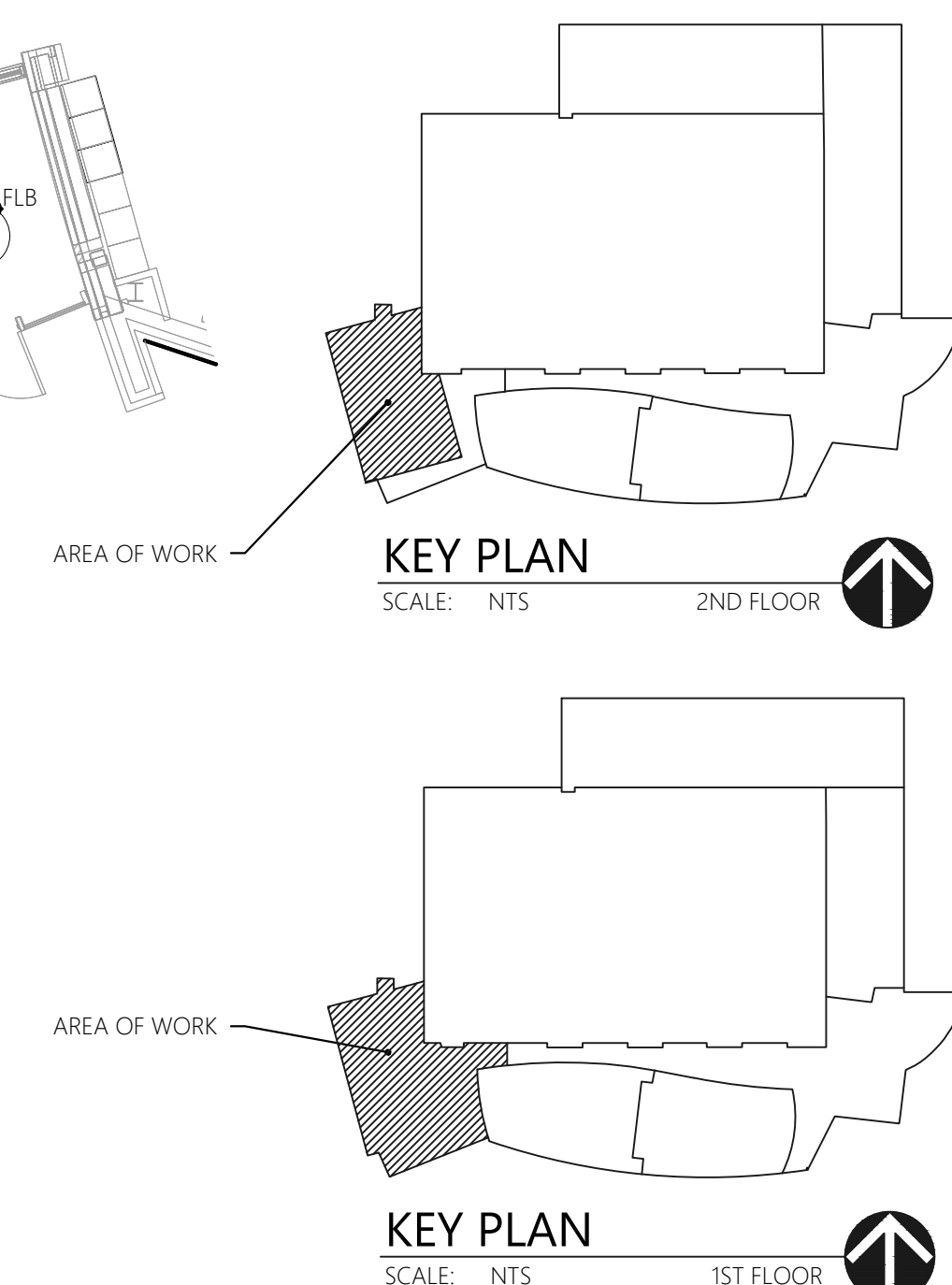
1 ELECTRICAL LIGHTING PLAN
SCALE: 1/8" = 1'-0"
1ST FLOOR

GENERAL SCOPE OF WORK:

- LIGHTING: LIGHTING FIXTURES SHOWN TO BE REMOVED & REPLACED IN KIND - UNLESS OTHERWISE INDICATED ON PLAN:
- MAINTAIN HOMERUNS, FOR RECONNECTION TO NEW LIGHTING FIXTURES.
 - MAINTAIN SWITCHING DEVICES/MEANS IN GOOD CONDITION THROUGHOUT PROJECT FOR RE-USE OF REPLACEMENT FIXTURES.
 - DISPOSE OF ALL LAMPS IN ACCORDANCE WITH STATE/FEDERAL AND EPA REQUIREMENTS.
 - SUNY CANTON SHALL HAVE RIGHT OF FIRST REFUSAL FOR ALL REMOVED FIXTURES. ALL REMAINING FIXTURES SHALL BECOME THE PROPERTY OF THE CONTRACTOR.
 - REPLACE REMOVED FIXTURES IN ORIGINAL LOCATION. REFER TO LUMINAIRE SCHEDULE, SHEET E001, FOR ADDITIONAL INFORMATION.

GENERAL SHEET NOTES:

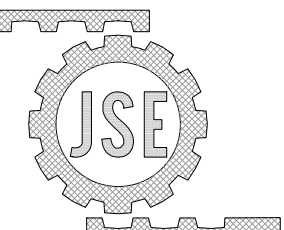
1. REFER TO E001 FOR ELECTRICAL LEGENDS, ABBREVIATIONS AND GENERAL PROJECT NOTES.
2. ALL CONDUCTORS SHALL BE THHN/THWN-2.
3. INSTALLATION SHALL BE PER NECA1 GUIDELINES.
4. PROVIDE HANGARS & SUPPORTS AS REQUIRED.
5. PROVIDE GROUNDING PER NEC FOR ALL ELECTRICAL EQUIPMENT AND ASSOCIATED EQUIPMENT.
6. PROVIDE SUBMITTAL DATA FOR ALL PROPOSED HARDWARE, DEVICES, CONDUIT, HANGERS, ETC. FOR ENGINEER REVIEW & APPROVAL PRIOR TO ORDERING.
7. ALL CONDUCTORS AND EQUIPMENT NOT SHOWN FOR CLARITY. COORDINATE WITH ALL TRADES AND PROVIDE COMPLETE ELECTRICAL CIRCUITING FOR ALL INSTALLED EQUIPMENT. ALL REQUIREMENTS TO BE PER NEC.



NO.	DESCRIPTION	DATE



JADE STONE ENGINEERING
mechanical, electrical, plumbing



444 VANDUZZEE ST. WATERTOWN NY 13601
P: 315.836.4062 jse.engineering

JSE PROJECT NO: 305-21	SCALE: AS NOTED	DATE: 03-11-22
DRAWN BY: MM	CHECKED BY: RW	

ELECTRICAL LIGHTING PLAN

SUNY CANTON 231068 REPLACE LIGHTING - CONVOCATION ATHLETIC RECREATION CENTER

STATE UNIVERSITY OF NEW YORK AT CANTON
ST. LAWRENCE COUNTY

JSE SHEET NO.
E104

REVIEW DOCUMENTS

IT IS A VIOLATION OF NEW YORK STATE LAW, SECTION 7209, FOR ANY PERSON TO ALTER ANY DOCUMENT THAT BEARS THE SEAL OF A PROFESSIONAL ENGINEER, UNLESS THE PERSON IS ACTING UNDER THE DIRECTION OF A LICENSED PROFESSIONAL ENGINEER. IF ALTERED, SUCH LICENSEE SHALL AFFIX HIS OR HER SEAL AND THE NOTIFICATION "ALTERED BY" FOLLOWED BY HIS OR SIGNATURE, DATE AND A SPECIFIC DESCRIPTION OF THE ALTERATION.

DALI Controller										
1			2				3			
Row	12	9	8	7	6	5	4	3	2	1
12	11	23	35	11	23	35	47	11	23	35
11	10	22	34	10	22	34	46	10	22	34
10	9	21	33	9	21	33	45	9	21	33
9	8	20	32	8	20	32	44	8	20	32
8	7	19	31	7	19	31	43	7	19	31
7	6	18	30	6	18	30	42	6	18	30
6	5	17	29	5	17	29	41	5	17	29
5	4	16	28	4	16	28	40	4	16	28
4	3	15	27	3	15	27	39	3	15	27
3	2	14	26	2	14	26	38	2	14	26
2	1	13	25	1	13	25	37	1	13	25
1	0	12	24	0	12	24	36	0	12	24
Row	10	9	8	7	6	5	4	3	2	1

1 'FIXTURE-ON' SETTING FOR MAINTENANCE MODE
SCALE: N/A

NON-SHADED RECTANGLE REPRESENTS LIGHT FIXTURE 'OFF', TYP.
SHADED RECTANGLE REPRESENTS LIGHT FIXTURE 'ON', TYP.

DALI Controller										
1			2				3			
Row	12	9	8	7	6	5	4	3	2	1
12	11	23	35	11	23	35	47	11	23	35
11	10	22	34	10	22	34	46	10	22	34
10	9	21	33	9	21	33	45	9	21	33
9	8	20	32	8	20	32	44	8	20	32
8	7	19	31	7	19	31	43	7	19	31
7	6	18	30	6	18	30	42	6	18	30
6	5	17	29	5	17	29	41	5	17	29
5	4	16	28	4	16	28	40	4	16	28
4	3	15	27	3	15	27	39	3	15	27
3	2	14	26	2	14	26	38	2	14	26
2	1	13	25	1	13	25	37	1	13	25
1	0	12	24	0	12	24	36	0	12	24
Row	10	9	8	7	6	5	4	3	2	1

2 'FIXTURE-ON' SETTING FOR COURT #1
SCALE: N/A

DALI Controller										
1			2				3			
Row	12	9	8	7	6	5	4	3	2	1
12	11	23	35	11	23	35	47	11	23	35
11	10	22	34	10	22	34	46	10	22	34
10	9	21	33	9	21	33	45	9	21	33
9	8	20	32	8	20	32	44	8	20	32
8	7	19	31	7	19	31	43	7	19	31
7	6	18	30	6	18	30	42	6	18	30
6	5	17	29	5	17	29	41	5	17	29
5	4	16	28	4	16	28	40	4	16	28
4	3	15	27	3	15	27	39	3	15	27
3	2	14	26	2	14	26	38	2	14	26
2	1	13	25	1	13	25	37	1	13	25
1	0	12	24	0	12	24	36	0	12	24
Row	10	9	8	7	6	5	4	3	2	1

3 'FIXTURE-ON' SETTING FOR COURT #2
SCALE: N/A

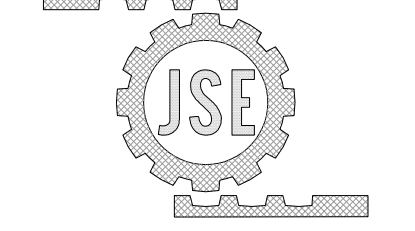
DALI Controller										
1			2				3			
Row	12	9	8	7	6	5	4	3	2	1
12	11	23	35	11	23	35	47	11	23	35
11	10	22	34	10	22	34	46	10	22	34
10	9	21	33	9	21	33	45	9	21	33
9	8	20	32	8	20	32	44	8	20	32
8	7	19	31	7	19	31	43	7	19	31
7	6	18	30	6	18	30	42	6	18	30
6	5	17	29	5	17	29	41	5	17	29
5	4	16	28	4	16	28	40	4	16	28
4	3	15	27	3	15	27	39	3	15	27
3	2	14	26	2	14	26	38	2	14	26
2	1	13	25	1	13	25	37	1	13	25
1	0	12	24	0	12	24	36	0	12	24
Row	10	9	8	7	6	5	4	3	2	1

4 'FIXTURE-ON' SETTING FOR COURT #3
SCALE: N/A

DESCRIPTION	DATE



JADE STONE ENGINEERING
mechanical, electrical, plumbing



444 VANDUZZEE ST. WATERTOWN NY 13601
P: 315.836.4062 jse.engineering

JSE PROJECT NO: 305-21	SCALE: AS SHOWN	DATE: 03-11-22
DRAWN BY: N/A	CHECKED BY: RW	

ELECTRICAL FIELDHOUSE LIGHTING CONTROL SCHEDULES
SUNY CANTON 231068 REPLACE LIGHTING CONVOCATION ATHLETIC RECREATION CENTER
STATE UNIVERSITY OF NEW YORK AT CANTON
ST. LAWRENCE COUNTY

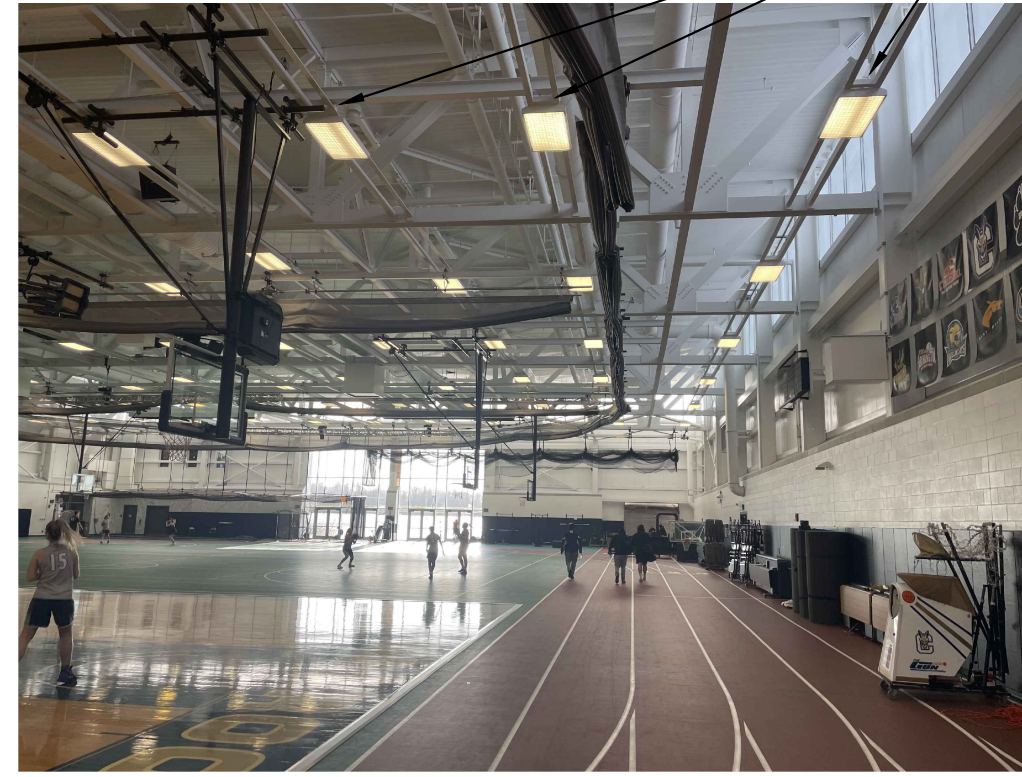
JSE SHEET NO.
E501
REVIEW DOCUMENTS

REPLACE EXISTING FIXTURES WITH NEW. MOUNT NEW FIXTURES IN SAME LOCATIONS. MAINTAIN EXISTING CONDUIT, CONDUCTORS & JUNCTION BOXES, TYP.



1 PHOTO OF EXISTING FIELDHOUSE LIGHT FIXTURE SCALE: N/A

REPLACE EXISTING FIXTURES WITH NEW. MOUNT NEW FIXTURES IN SAME LOCATIONS. MAINTAIN EXISTING CONDUIT, CONDUCTORS & JUNCTION BOXES, TYP.



2 PHOTO OF EXISTING FIELDHOUSE LIGHT FIXTURE SCALE: N/A

GENERAL SHEET NOTES:

1. REFER TO E001 FOR ELECTRICAL LEGENDS, ABBREVIATIONS AND GENERAL PROJECT NOTES.
2. ALL CONDUCTORS SHALL BE THHN/THWN-2.
3. INSTALLATION SHALL BE PER NECAT GUIDELINES.
4. PROVIDE HANGARS & SUPPORTS AS REQUIRED.
5. PROVIDE GROUNDING PER NEC FOR ALL ELECTRICAL EQUIPMENT AND ASSOCIATED EQUIPMENT.
6. PROVIDE SUBMITTAL DATA FOR ALL PROPOSED HARDWARE, DEVICES, CONDUIT, HANGERS, ETC. FOR ENGINEER REVIEW & APPROVAL PRIOR TO ORDERING.
7. ALL CONDUCTORS AND EQUIPMENT NOT SHOWN FOR CLARITY. COORDINATE WITH ALL TRADES AND PROVIDE COMPLETE ELECTRICAL CIRCUITING FOR ALL INSTALLED EQUIPMENT. ALL REQUIREMENTS TO BE PER NEC.

#	DESCRIPTION	DATE



JADE STONE ENGINEERING
mechanical, electrical, plumbing

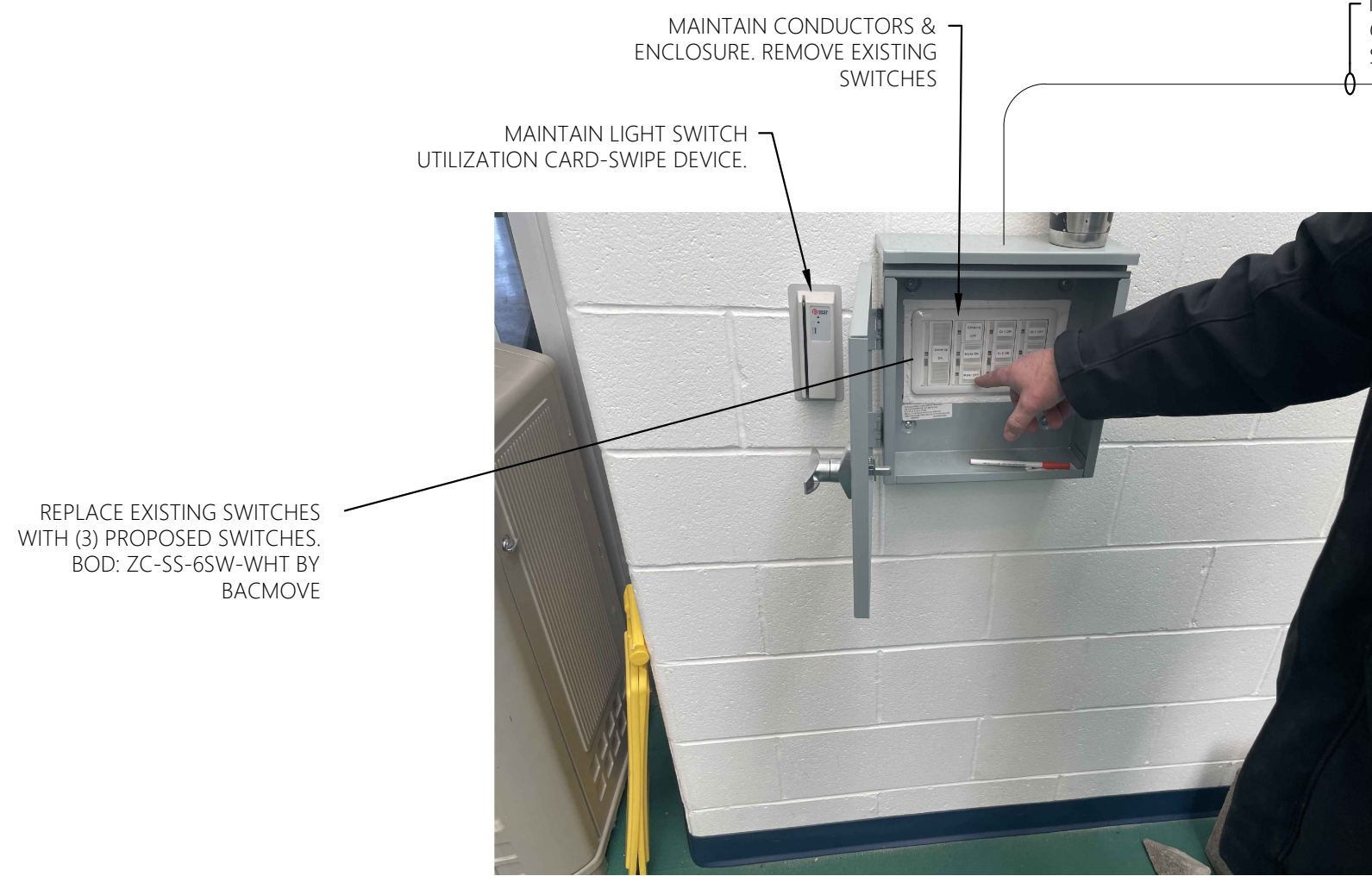
444 VANDUZZE ST. WATERTOWN NY 13601
P: 315.836.4062 jse.engineering

JSE PROJECT NO: 305-21	SCALE: AS NOTED	DATE: 03-11-22
DRAWN BY: NJM	CHECKED BY: BEM	

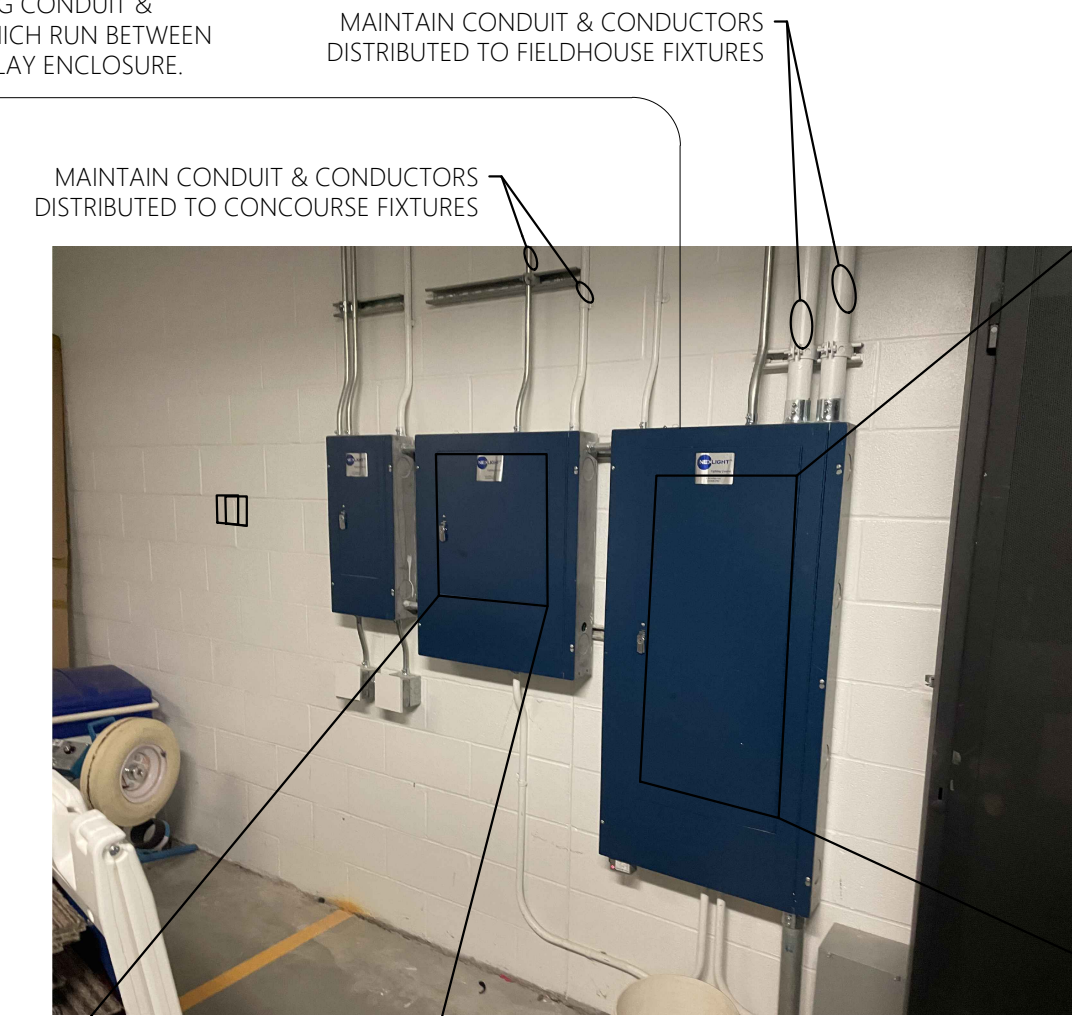
ELECTRICAL DETAILS
SUNY CANTON 231068 REPLACE LIGHTING-
CONVOCATION ATHLETIC RECREATION CENTER
STATE UNIVERSITY OF NEW YORK AT CANTON
ST. LAWRENCE COUNTY

JSE SHEET NO.
E600
REVIEW DOCUMENTS

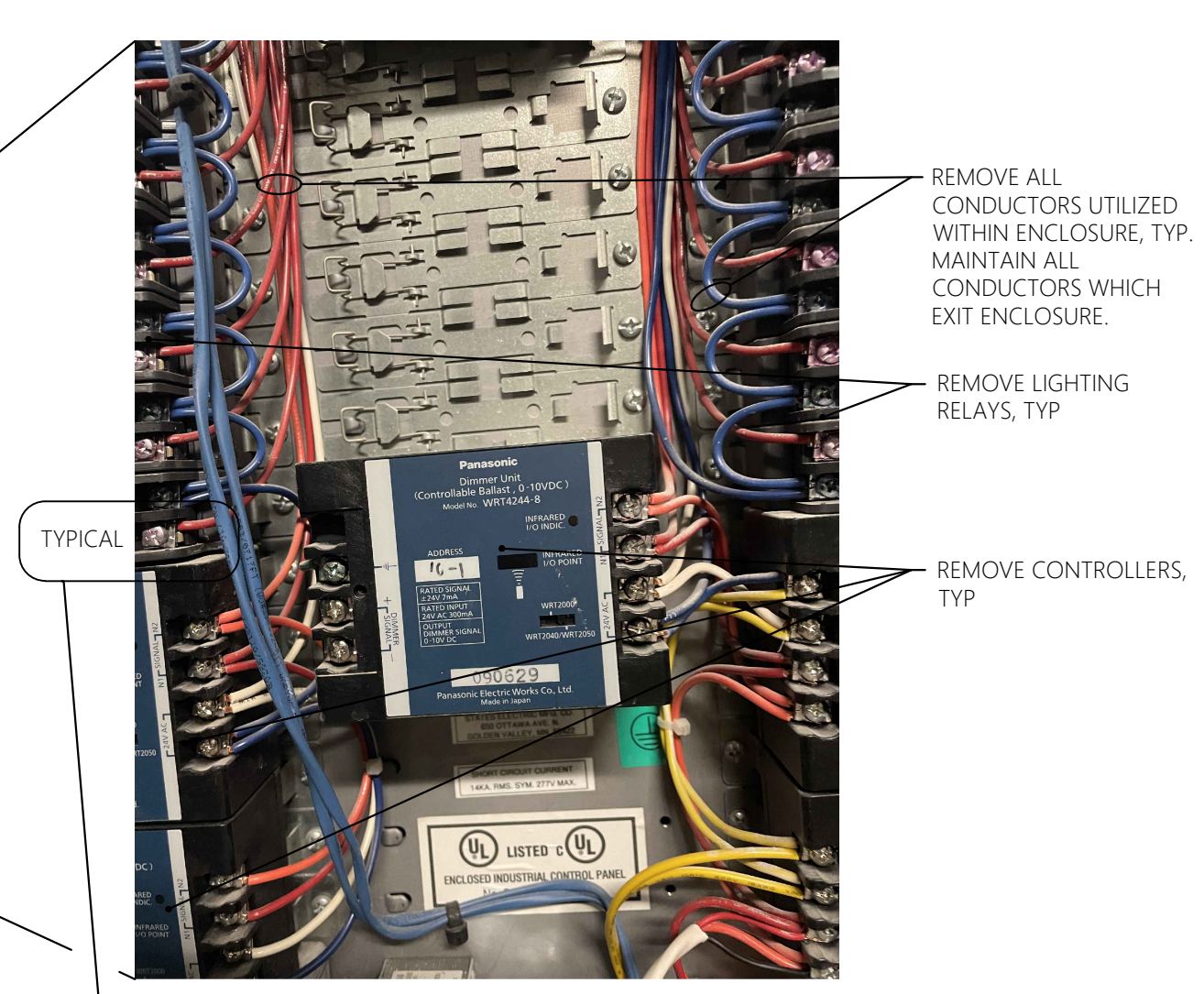
IT IS A VIOLATION OF NEW YORK STATE LAW, SECTION 7209, FOR ANY PERSON TO ALTER ANY DOCUMENT THAT BEARS THE SEAL OF A PROFESSIONAL ENGINEER, UNLESS THE PERSON IS ACTING UNDER THE DIRECTION OF A LICENSED PROFESSIONAL ENGINEER. IF ALTERED, SUCH LICENSEE SHALL AFFECT HIS OR HER SEAL AND THE NOTIFICATION 'ALTERED BY' FOLLOWED BY HIS OR HER SIGNATURE, DATE AND A SPECIFIC DESCRIPTION OF THE ALTERATION.



1 PHOTO OF EXISTING FIELDHOUSE LIGHTING CONTROL SWITCHES
SCALE: N/A

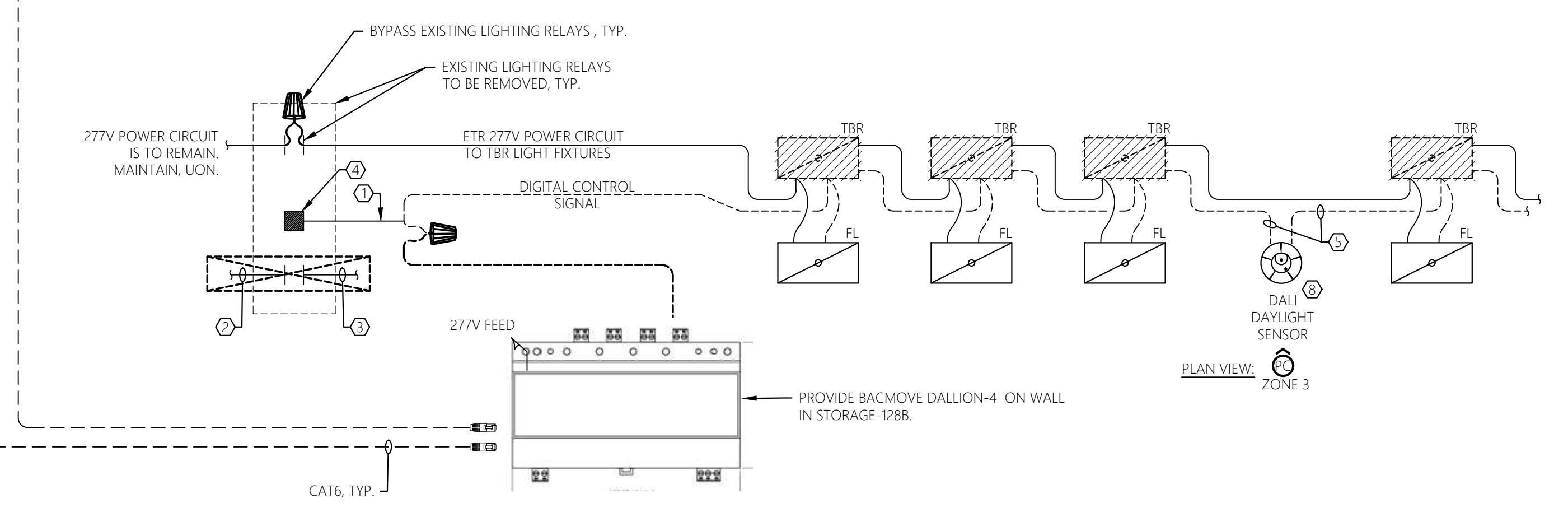
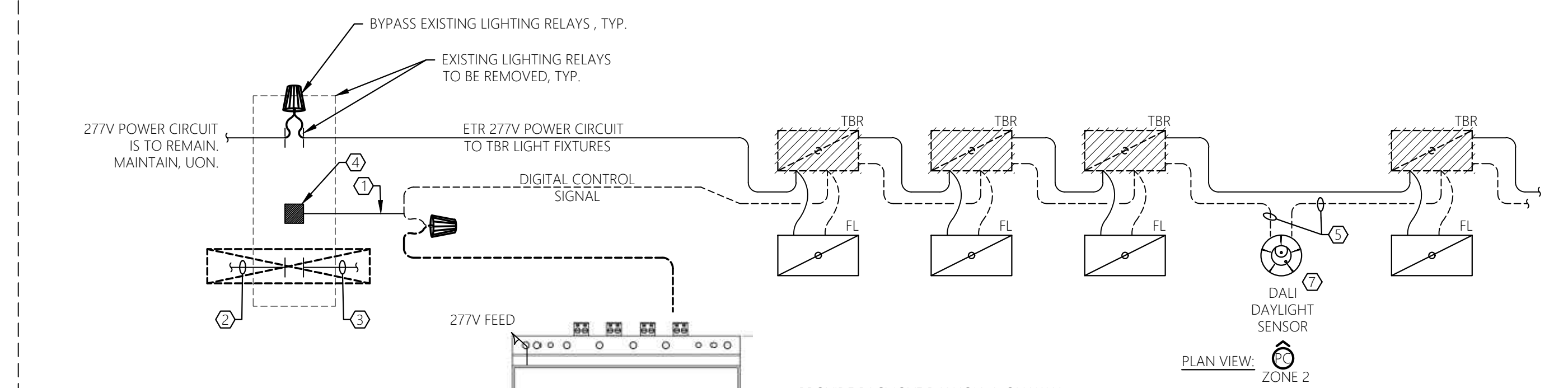
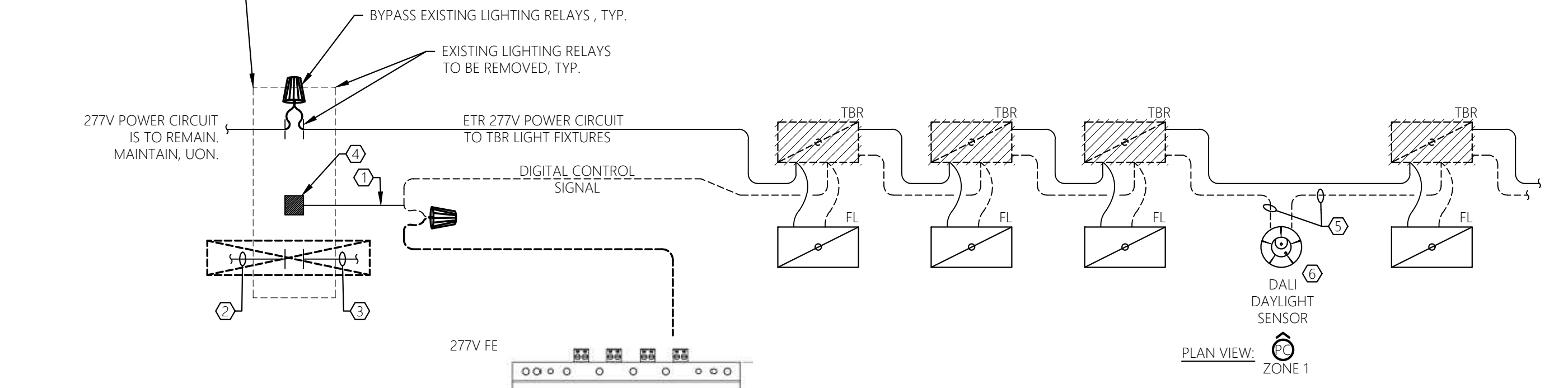
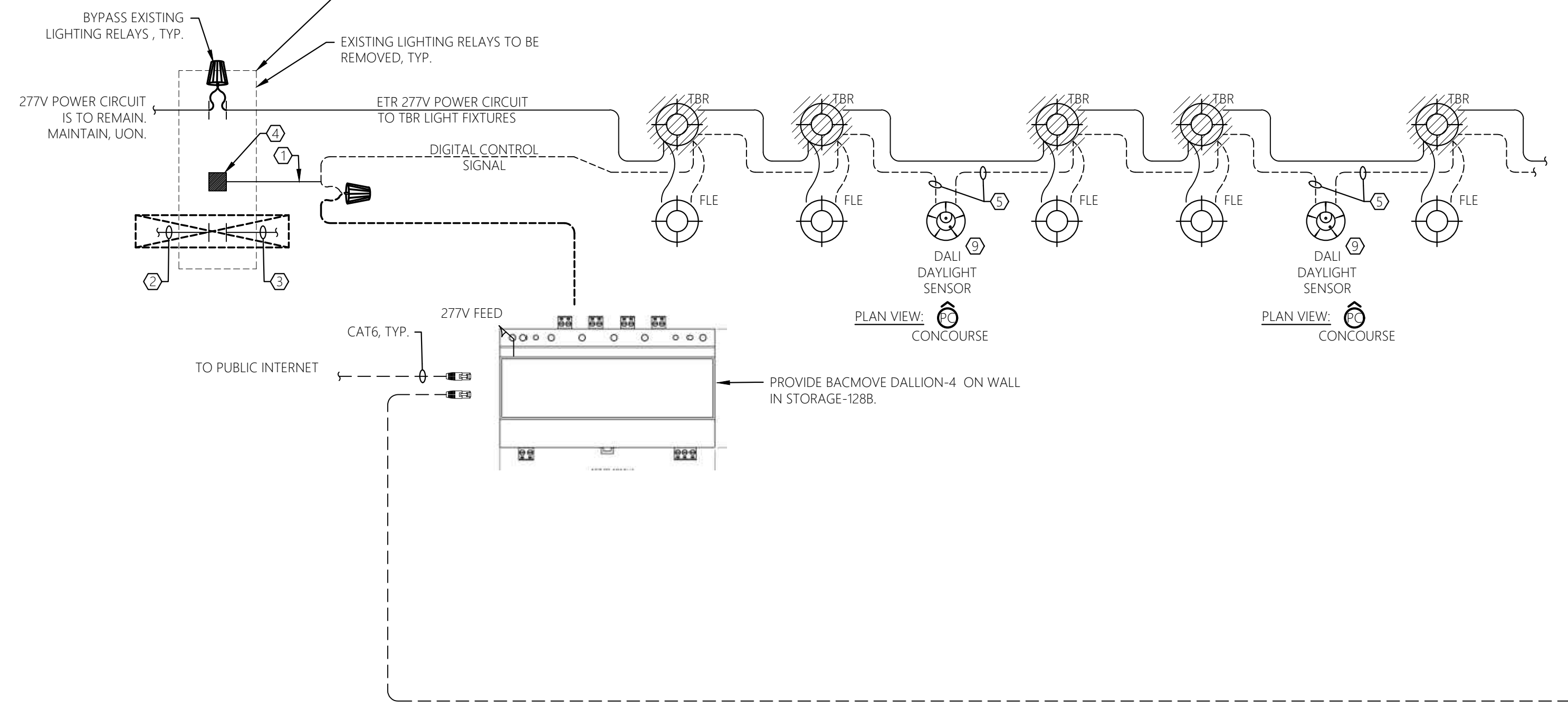
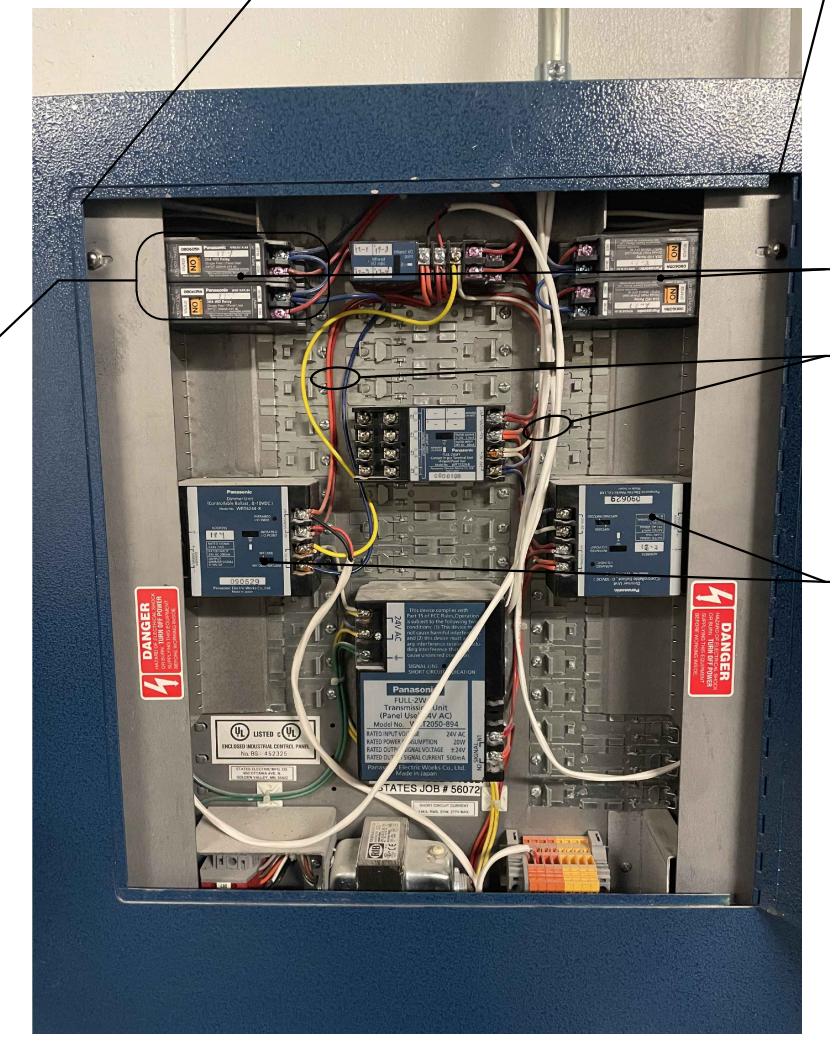


2 EXISTING FIELDHOUSE LIGHTING CONTROL PANELS
SCALE: N/A



LIGHTING CONTROL PERFORMANCE BASED REQUIREMENTS:

- LIGHTING CONTROL BASIS OF DESIGN EQUIPMENT/PARTS NOTED HEREIN HAS BEEN SPECIFICALLY SELECTED FOR THE ENERGY & PERFORMANCE REQUIREMENTS ESTABLISHED BY THE CAMPUS FOR THE SPECIFIC APPLICATION SHOWN. ALL PRODUCTS SHALL BE AS SPECIFIED, OR APPROVED EQUALS, OR EQUAL PRODUCTS SHALL BE SUBMITTED AND APPROVED BY CAMPUS PRIOR TO INSTALLATION.
- CONTRACTOR SHALL PROVIDE STARTUP AND COMMISSIONING TO INCLUDE:
 - o ON-SITE INITIAL PROGRAMMING
 - o COORDINATION WITH CAMPUS IT TO ESTABLISH WEB BASED CONNECTION/LINK
- CONTRACTOR SHALL PROVIDE A 10 YEAR WARRANTY FOR THE LIGHTING CONTROL HARDWARE ASSOCIATED WITH THE CONCOURSE AND FIELD HOUSE LIGHTING SYSTEM, TERMS OF WHICH SHALL INCLUDE:
 - o WARRANTY TO INCLUDE REPAIR OR REPLACEMENT OF FAULTY HARDWARE SWITCHES, DALI CONTROLLERS, AND/OR DAYLIGHT SENSORS. WARRANTY SHALL INCLUDE PARTS AND PROGRAMMING.
 - o ANY CAMPUS REQUESTED REPROGRAMMING (TO INCLUDE ZONE RECONFIGURATION OR INTENSITY LEVEL SETTINGS)



GENERAL SHEET NOTES:

1. REFER TO E001 FOR ELECTRICAL LEGENDS, ABBREVIATIONS AND GENERAL PROJECT NOTES.
2. ALL CONDUCTORS SHALL BE THHN/THWN-2.
3. INSTALLATION SHALL BE PER NECAT GUIDELINES.
4. PROVIDE HANGARS & SUPPORTS AS REQUIRED.
5. PROVIDE GROUNDING PER NEC FOR ALL ELECTRICAL EQUIPMENT AND ASSOCIATED EQUIPMENT.
6. PROVIDE SUBMITTAL DATA FOR ALL PROPOSED HARDWARE, DEVICES, CONDUIT, HANGERS, ETC. FOR ENGINEER REVIEW & APPROVAL PRIOR TO ORDERING.
7. ALL CONDUCTORS AND EQUIPMENT NOT SHOWN FOR CLARITY. COORDINATE WITH ALL TRADES AND PROVIDE COMPLETE ELECTRICAL CIRCUITING FOR ALL INSTALLED EQUIPMENT. ALL REQUIREMENTS TO BE PER NEC.

SHEET KEY NOTES:

- ① INTERCEPT EXISTING DIMMING BRANCH CIRCUITS & REROUTE TO NEW DALI LOAD CONTROLLER
- ② REMOVE UNUSED EXISTING 277V CIRCUIT BACK TO SOURCE PANEL & LABEL BREAKERS AS SPARE.
- ③ REMOVE UNUSED EXISTING 277V FEEDER TO TBR LIGHT FIXTURES, TYP.
- ④ EXISTING DIMMING CONTROLLER TBR.
- ⑤ INTERCEPT CONTROL CIRCUIT SHOWN AS REQUIRED. PROVIDE 12 AWG SIGNAL CONDUCTORS.
- ⑥ PROVIDE GYM ZONE #1 DAYLIGHT SENSOR, SHOWN IN THIS LOCATION FOR ILLUSTRATION PURPOSE ONLY. REFER TO SHEET E100 FOR ACTUAL LOCATION. BOD: ZENCONTROL BY BACMOVE
- ⑦ PROVIDE GYM ZONE #2 DAYLIGHT SENSOR, SHOWN IN THIS LOCATION FOR ILLUSTRATION PURPOSE ONLY. REFER TO SHEET E100 FOR ACTUAL LOCATION. BOD: ZENCONTROL BY BACMOVE
- ⑧ PROVIDE GYM ZONE #3 DAYLIGHT SENSOR, SHOWN IN THIS LOCATION FOR ILLUSTRATION PURPOSE ONLY. REFER TO SHEET E100 FOR ACTUAL LOCATION. BOD: ZENCONTROL BY BACMOVE
- ⑨ PROVIDE CONCOURSE ZONE DAYLIGHT SENSOR, SHOWN IN THIS LOCATION FOR ILLUSTRATION PURPOSE ONLY. REFER TO SHEET E100 FOR ACTUAL LOCATION. BOD: ZENCONTROL BY BACMOVE

NO.	DESCRIPTION	DATE



JADE STONE ENGINEERING
mechanical, electrical, plumbing

444 VANDUZZE ST. WATERTOWN NY 13601
P: 315.836.4062 jse.engineering

JSE PROJECT NO: 305-21
DRAWN BY: NAW
CHECKED BY: RWB
SCALE: AS NOTED
DATE: 03-11-22

ELECTRICAL DETAILS

SUNY CANTON 231068 REPLACE LIGHTING - CONVOCATION ATHLETIC RECREATION CENTER

STATE UNIVERSITY OF NEW YORK AT CANTON
ST. LAWRENCE COUNTY

JSE SHEET NO. **E601**

REVIEW DOCUMENTS